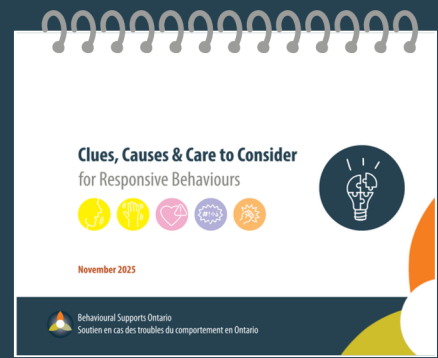


Clues, Causes and Care to Consider for Responsive Behaviours

A Reference Tool to Identifying Unmet Needs, Implementing Preventative Approaches, and Responding in the Moment



A 150+ page evidence-informed resource to refer to during behavioural assessment and care planning. It supports care teams to:

- ✓ Identify potential causes of responsive behaviours,
- ✓ Develop preventative strategies, and
- ✓ Respond effectively in the moment.



Remember these are clues to consider!

Consider additional contributing factors and preventative approaches based on the person's individual needs and context.



Scan the QR Code to download a copy!



Inclusive of all the behaviours listed within the BSO-DOS[®] and is structured using the PIECES[™] acronym to support integration of trusted clinical tools and resources.



Contains a dedicated section regarding personal care.

Implementation Checklist

- ☐ Download the resource from brainXchange.ca/CCC and print according to the printing instructions.
- ☐ Introduce and make the printed resource accessible to your team.

Key points to share:

- This is not meant to be read from cover to cover. Specific sections can be referred to as needed to support assessment and care planning.
- This is a reference tool - care strategies should be based on individual assessment, and tailored to the person and the care setting.

- ☐ Utilize team huddles to reflect on successes and challenges in using the resource.
- ☐ Scan the QR Code to provide feedback on the resource.

