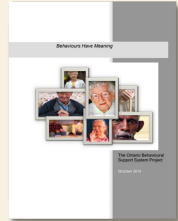


# Behavioural Supports Ontario (BSO) Celebrates 10 Years: A Timeline of Key Provincial Milestones

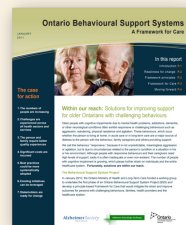
2010

Launch of Ontario Behavioural Support System Project



2011

Development of BSO Pillars & Framework of Care  
Launch of BSO in 4 Early-Adopter Regions



2012

\$44M Investment into BSO in Long-Term Care

Official launch of BSO across Ontario  
Launch of the BSO Operations Committee

2013 & 2014

Development of regional referral processes  
Establishment of evaluation metrics

2015



Re-emergence of a BSO Provincial Coordinating Office  
Release of the quarterly BSO Provincial Newsletter  
Launch of the BSO Provincial Structure:

- Steering Committee
- Systems Performance & Evaluation Advisory

BSO teams accept 33,292 referrals to support individuals across sectors

2016

\$10M Investment into BSO in Long-Term Care

Development of BSO Websites  
Launch of the Lived Experience Advisory and the Knowledge Translation & Communications Advisory

Launch of Provincial Communities of Practices:

- Substance Use
- Behavioural Supports Integrated Teams
- Behavioural Supports Transition Units
- Knowledge to Practice Community of Practice



BSO teams submit 92 BSO stories describing their experiences supporting individuals, their impact, and lessons learned

2017

\$10M Investment into BSO in Long-Term Care

\$1.5M Investment into BSO Centralized Access & Coordination



Knowledge to Practice Products:

- Environmental Scan of Ontario's Behavioural Support Transition Units (BSTUs)
- Making Connections: Recommendations to Enhance the Use of Personhood Tools

Launch of Person-Centred Language Initiative

Launch of the Dementia Observation System (DOS) Working Group

BSO teams support 3,351 individuals to move from community settings into long-term care homes

2018

\$10M Investment into BSO in Long-Term Care

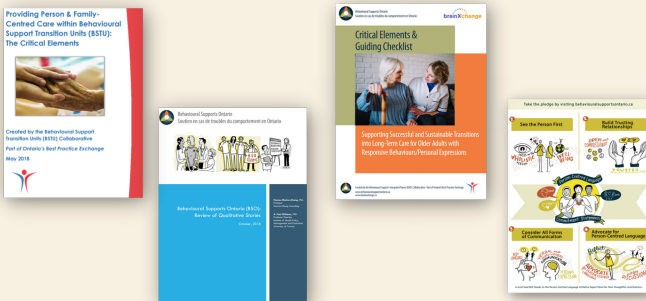
\$10.5M Investment into BSO in Community/Hospital

Release of BSO: Review of Qualitative Stories (Evaluation)

Knowledge to Practice Products:

- Providing Person & Family Centred Care within Behavioural Support Transition Units (BSTU): The Critical Elements
- Knowledge to Practice Planning Worksheet

BSO teams support 65,851 family care partners of individuals referred



2019

\$3M Investment into BSO in Community/Hospital

Release of the Behavioural Supports Ontario-Dementia Observation System (BSO-DOS®)

Release of the Behavioural Education & Training Supports Inventory (BETS)

Launch of the:

- BSO Practice Standards & Toolkit Working Group
- Behavioural Supports in Acute Care Collaborative
- Sexual Expression & Dementia Initiative

Knowledge to Practice Products:

- Cannabis and Older Adults: Know the Facts!
- Supporting Successful and Sustainable Transitions into Long-Term Care for Older Adults with Responsive Behaviours/Personal Expressions

BSO teams provide core competency training to 102,841 healthcare providers



2020

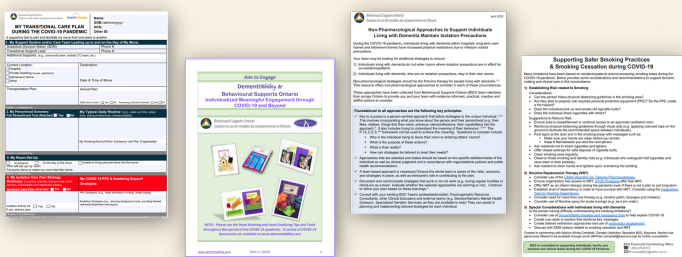
Release of the BSO Provincial Practice Standards  
Release of the French BSO-DOS®

Collaboration with brainXchange on a COVID-19 Resource Webpage

COVID-19 Knowledge to Practice Products:

- My Transitional Care Plan During the COVID-19 Pandemic
- Non-Pharmacological Approaches to Support Individuals Living with Dementia Maintain Isolation Precautions
- DementiaAbility & Behavioural Supports Ontario Individualized Meaningful Engagement through COVID-19 and Beyond
- Supporting Safer Smoking Practices
- Smoking Cessation during COVID-19
- Strategies for Building and Maintaining Social Connection for Long-Term Care Home Residents: Considerations for COVID-19 (with partner organizations)

BSO teams support 4,306 individuals to move out of hospitals into community settings or long-term care homes



2021

Knowledge to Practice Products:

- Knowledgeable Care Teams & Capacity Building: BSO's Path Forward within the Pandemic Context
- Behavioural Supports in Acute Care: Current Practices and Opportunities for Growth - Survey Results & Key Recommendations
- Dementia and Sexuality: An Introductory e-module
- Assessment Tools: Supporting Comprehensive Behavioural Assessment & Evaluation
- By Us For Us® Guide: Social Isolation and Dementia (with partner organizations)
- Indigenous Land Acknowledgement Guiding Framework

Release of BSO: Meeting New Challenges in the Time of COVID 19 - Full Report (Evaluation)

Redesign of BSO website on brainXchange



2022

Launch of the BSO Toolkit with standardized BSO documentation

Launch of the BSO Foundations Educations Program

Knowledge to Practice Product:

- Behavioural Supports in Acute Care Capacity Building Package



BSO's commitment, passion and impact continues!

