

IN THEIR OWN WORDS:

CARE PARTNERS SHARE THEIR
EXPERIENCES OF CARING FOR
SOMEONE LIVING IN A LONG-TERM
CARE HOME DURING THE COVID-19
PANDEMIC

2023 February 16

Providence
Care

Queen's
UNIVERSITY

HEALTH SERVICES AND
POLICY RESEARCH
INSTITUTE



CIHR IRSC

 Canadian Institutes of Health Research | Instituts de recherche en santé du Canada

PRESENTERS



Kim Schryburt - Brown

Occupational
Therapist, Clinical
Resource Project
Consultant



Logan Rogers

BHSc, OTA/ PTA,
MScOT Candidate



Samantha Leger

BFA, MScOT
Candidate



Catherine Donnelly

Occupational Therapist,
Director at Queen's
Health Services & Policy
Research Institute

Land Acknowledgement



(Graphic From BSO Indigenous Land Acknowledgement Framework, 2021)

OBJECTIVES

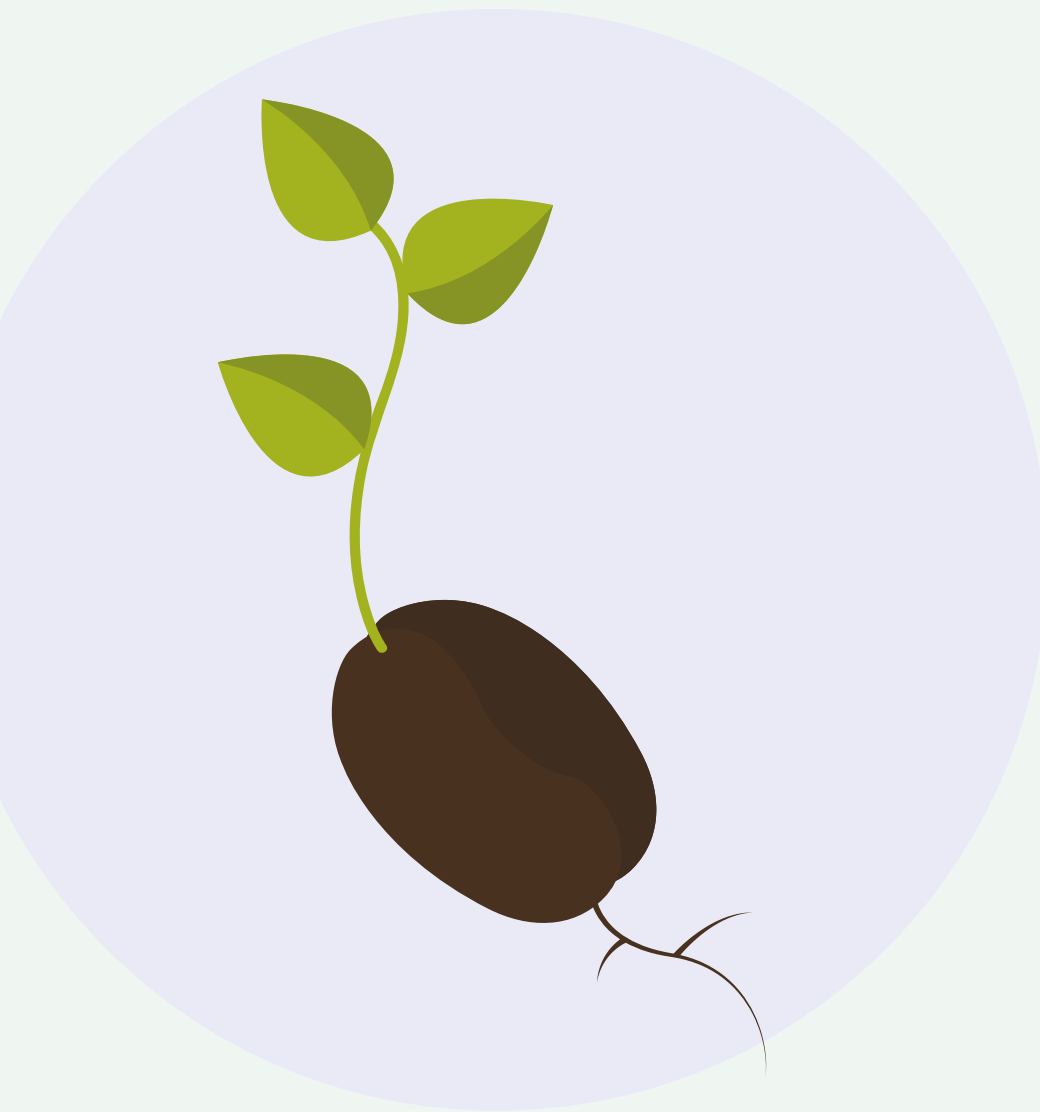


- Provide details about a University-Community partnership that is working to understand how residents of Long-term care (LTC) homes and their care partners were impacted by the COVID-19 pandemic and the resulting public health orders



- Share first-hand pandemic experiences of care partners of residents living in LTC homes in Ontario

W E B I N A R O V E R V I E W



Study's Origin
Story



Study Design



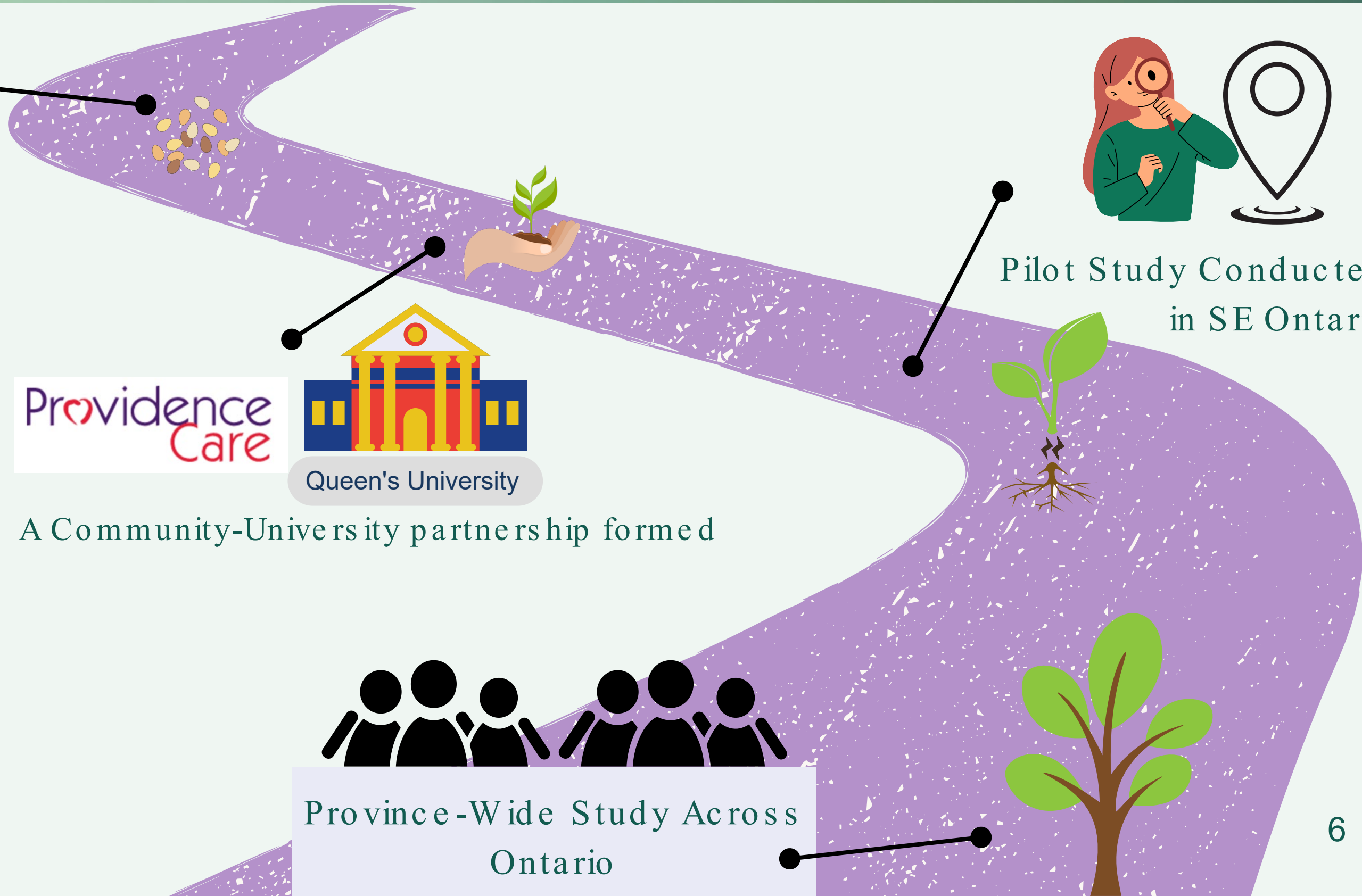
What did we
hear?



STUDY'S ORIGIN STORY



Clinicians noticed that COVID-19 restrictions were being implemented differently at different LTC homes



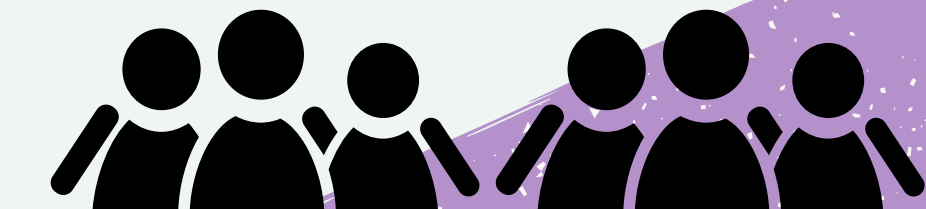
Providence Care



Queen's University

A Community-University partnership formed

Pilot Study Conducted in SE Ontario



Province-Wide Study Across Ontario



RESEARCH QUESTIONS

1. How did LTC facilities operationalize physical distancing measures in ways to maintain social connectivity?
2. Did these differential levels of social isolation impact resident health (SARS-CoV-2 infection, mortality, healthcare utilization) and wellness (function, behaviours, and psychological symptoms)?
3. What is the experience and impact of the physical distancing restrictions on patients, families, and caregivers?
4. How can LTC systems balance the need for social connection while minimizing risk of infection?

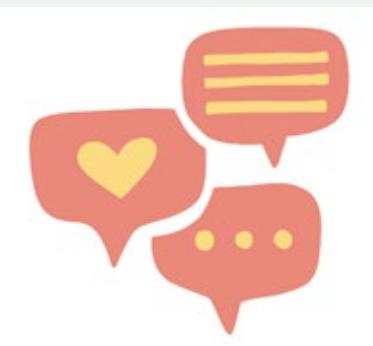


STUDY DESIGN



Linking survey data to health data:

Understand if LTC facilities were able to operationalize physical distancing measures in ways to maintain social connectivity and assess if these differential levels of social isolation impacted resident health and wellness



Interviews with residents, care partners, and LTC Management Personnel:

Understand the experience and impact of the physical distancing restrictions on patients, families, and caregivers



Deliberative dialogues with residents, care partners, healthcare providers, & government:

Provide recommendations to balance the need for social connection while minimizing risk of infection.

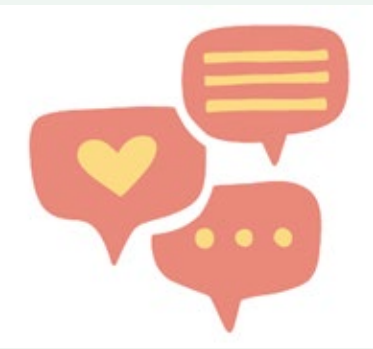


STUDY DESIGN



Linking survey data to health data:

Understand if LTC facilities were able to operationalize physical distancing measures in ways to maintain social connectivity and assess if these differential levels of social isolation impacted resident health and wellness



Interviews with residents, care partners, and LTC Management Personnel:

Understand the experience and impact of the physical distancing restrictions on patients, families, and caregivers



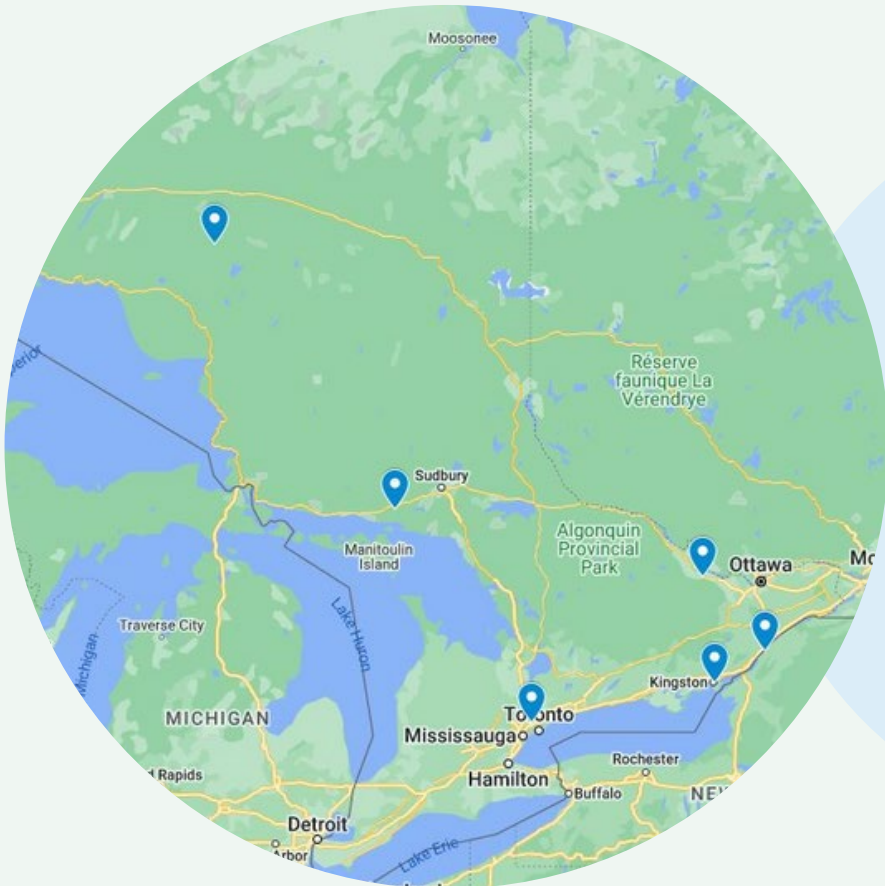
Deliberative dialogues with residents, care partners, healthcare providers, & government:

Provide recommendations to balance the need for social connection while minimizing risk of infection.

INTERVIEWS WITH RESIDENTS OF LTC



Interviewed 8
Residents of LTC



Distribution of
Interview Locations



LTC Homes

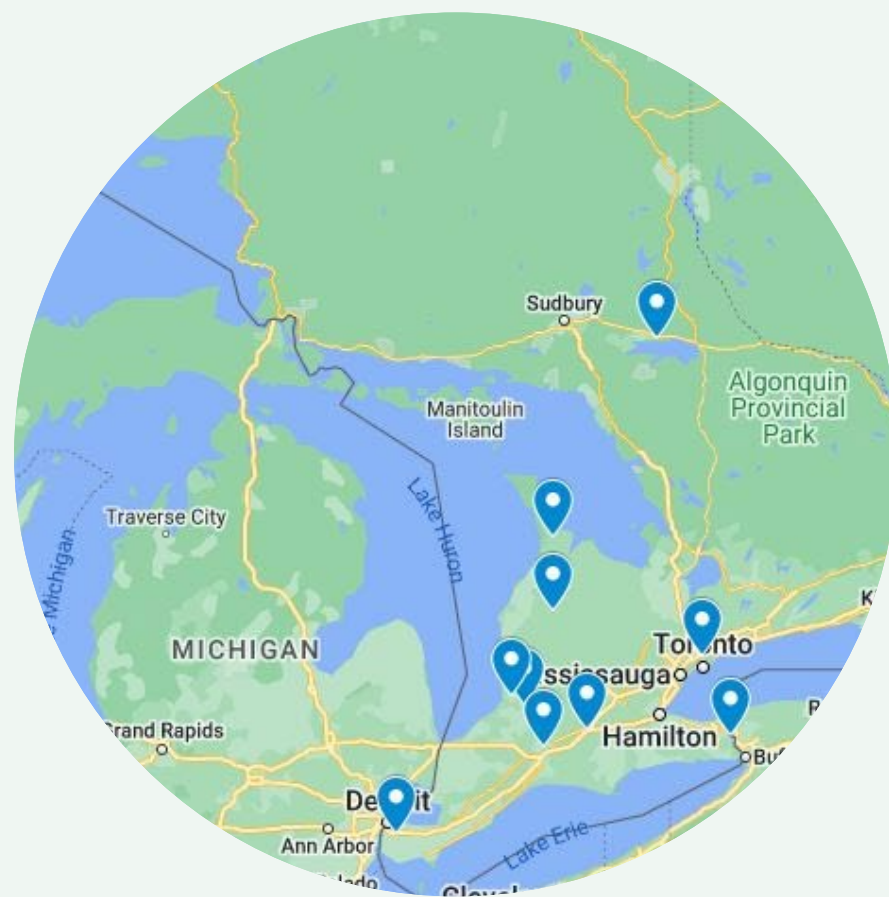


Participant
Descriptive Statistics

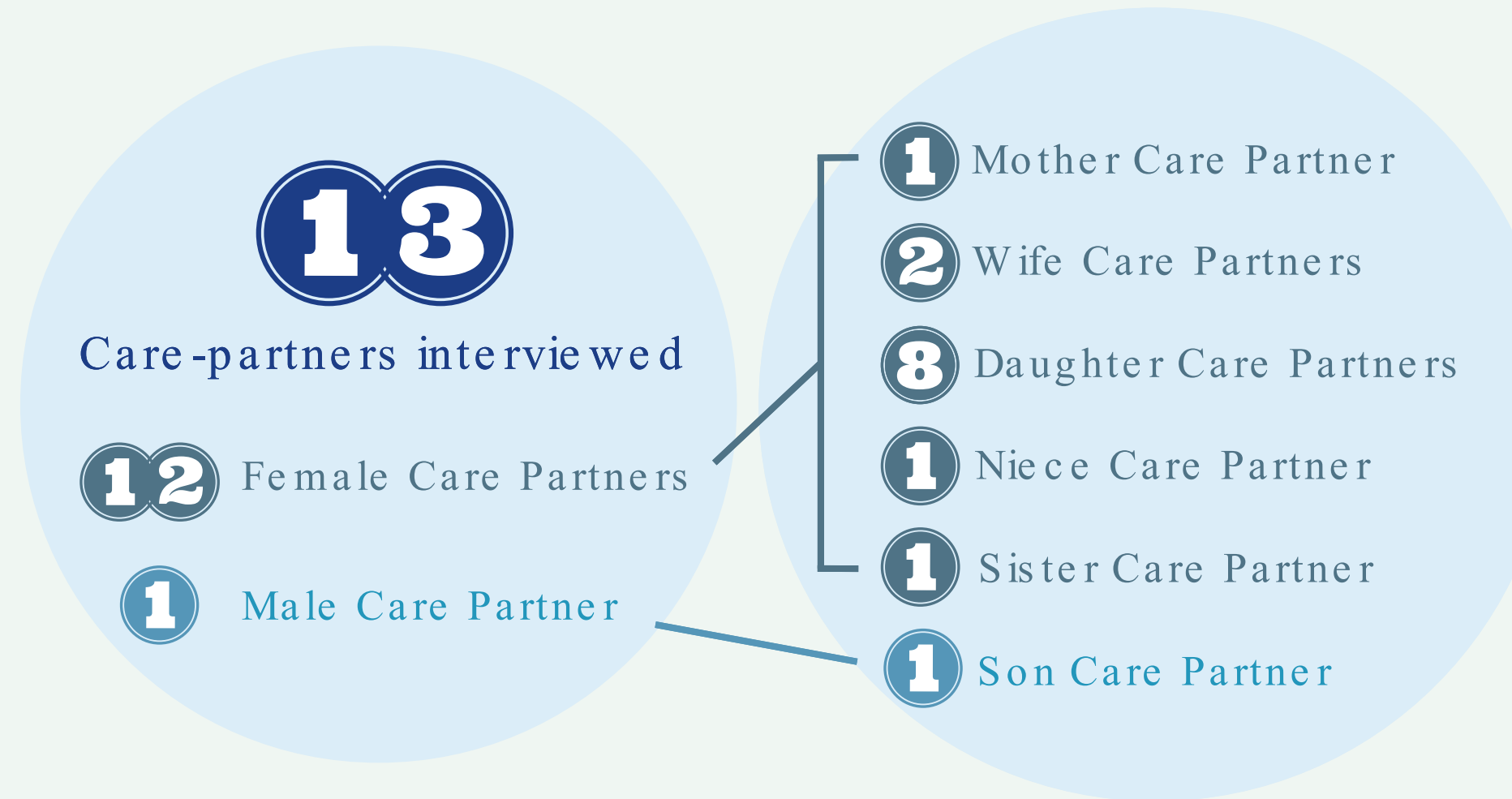
INTERVIEWS WITH CARE PARTNERS OF RESIDENTS OF LTC



Interviewed 13
Care partners of
Residents of LTC



Distribution of
Interview Locations



Participant Descriptive Statistics



WHAT DID WE HEAR?

[LTC CARE PARTNERS]

Deprivation

At their
mercy

In spite of ...

Gaining
Perspective



"Families were literally ripped apart because people couldn't agree because the government wasn't being open and honest and trustworthy."

- Participant 006

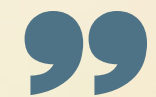


Deprivation



"She's so lonely. She cries for me because she doesn't understand why I can't go in."

- Participant 009



"Once COVID came, everything stopped... there were no activities, no outings."

- Participant 008



“

“I see the frustration in the staff... I feel for them. They're taking the bulk of it. They know that things are wrong and they're not right for the residents.”

- Participant 009

”

“

"I know my mom is safe there, I know she's loved there."

- Participant 006

”

“

"They've done the best they can."

- Participant 001

”

In spite of...



“They talked about it being a home, it was not a home. They talked about residents being first, they weren't first.” - Participant 008



At their mercy



“I just feel that there's more that could have been done.”
- Participant 006



“I'm watching and I can't do anything about it. I can't - it's so difficult.”
- Participant 009



“

"I've been trying to learn anything to help me through."
- Participant 009

”

“

"I'm not scared anymore. So I've made peace with it and I just feel like it is what it is."
- Participant 001

”

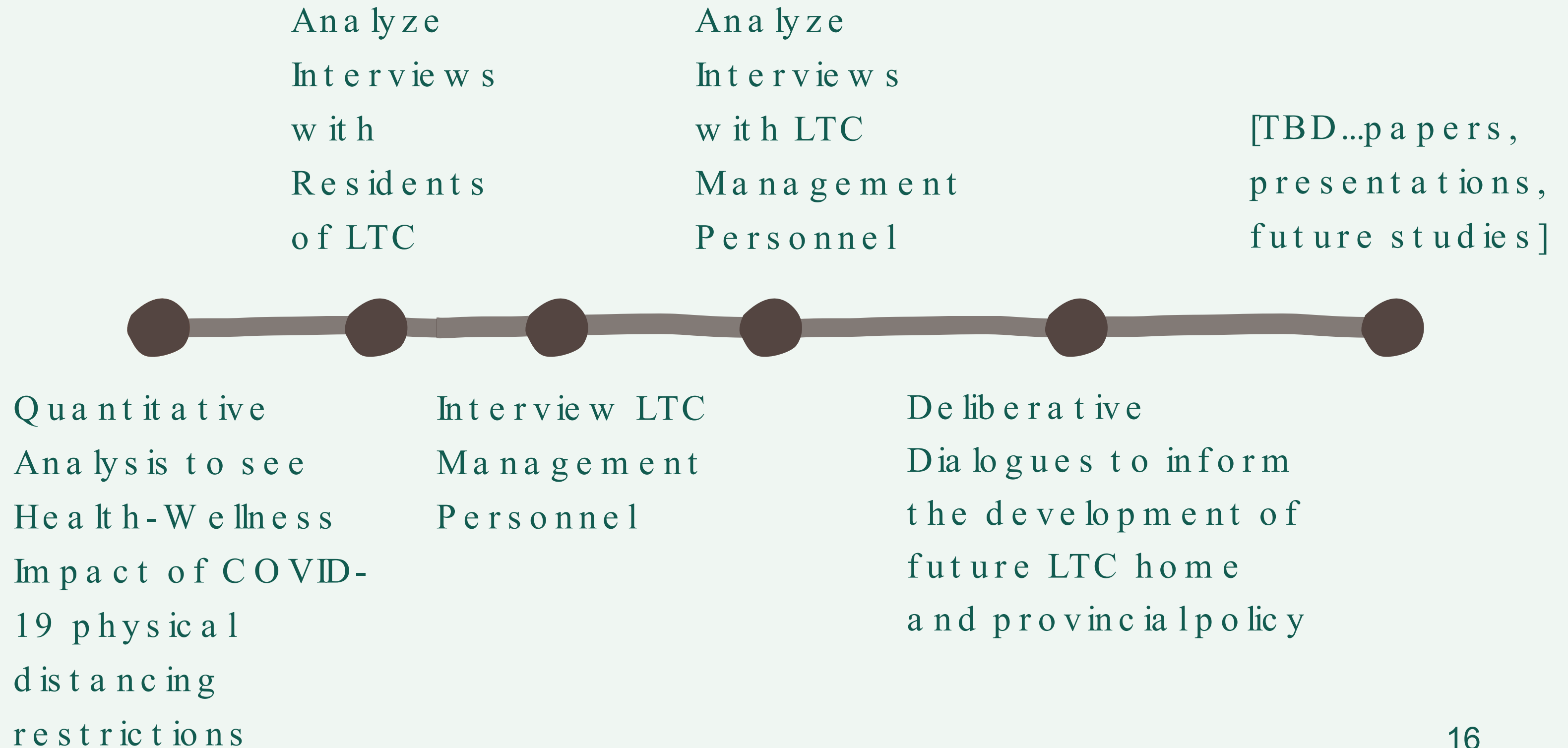
“

"Really all that matters to me is that my mom is safe and healthy and happy."
- Participant 009

”

Gaining Perspective

NEXT STEPS ...





ACKNOWLEDGEMENTS

Co-Investigators

- Dr. Rachelle Ashcroft
- Dr. Andrea Gruneir
- Dr. Ana Johnson
- Dr. Colleen Maxwell
- Dr. Dallas Seitz
- Dr. Matthias Hoben

Research Partners

- Carol Smith
- Providence Care

Funders

- Canadian Institutes of Health Research (CIHR)