

# The impact of COVID-19 in South East Ontario LTC homes:

The implementation of public health orders and resulting  
impact on resident health and wellness

November 29, 2023

# Presenters



**Kim Schryburt-Brown**

Clinical Resource Project  
Consultant, Seniors  
Mental Health  
Behavioural Support  
Services Providence Care  
Community



**Catherine Donnelly**

Director, Health Services  
& Policy Research  
Institute, Queen's  
University



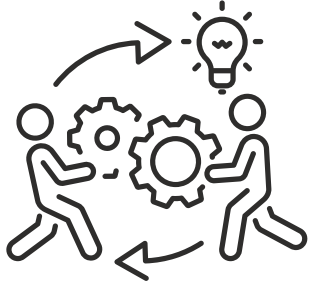
**Morgan Slater**

Research Scientist,  
Health Services & Policy  
Research Institute,  
Queen's University

# Land Acknowledgement



# Today's Objectives



Hear how LTC homes across SE Ontario implemented public health orders during the COVID-19 pandemic



Understand how the pandemic public health restrictions affected LTC resident health and wellness



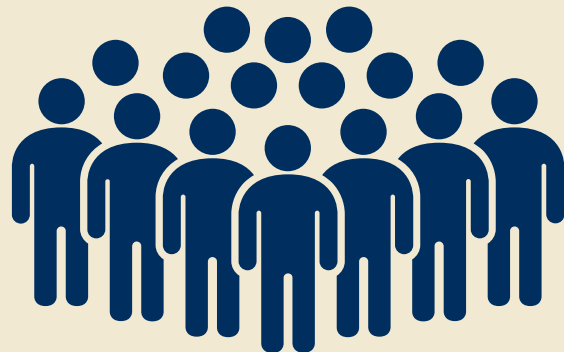
Have an opportunity to share your initial impressions of the findings as it relates to your own experiences

Clinicians noticed that public health restrictions were being implemented differently across LTC homes



Partnership between Providence Care and Queen's University

Pilot study conducted in SE Ontario



Ontario-wide study

# Methods



## Survey of LTC homes in SE Ontario

- Distributed in fall 2021
- Questions included: facility characteristics, staffing, resident activities and visits
- Asked to remember onset of pandemic (April 2020) and current (Sept/Oct 2021)



## Analysis of health administrative data (including the RAI)

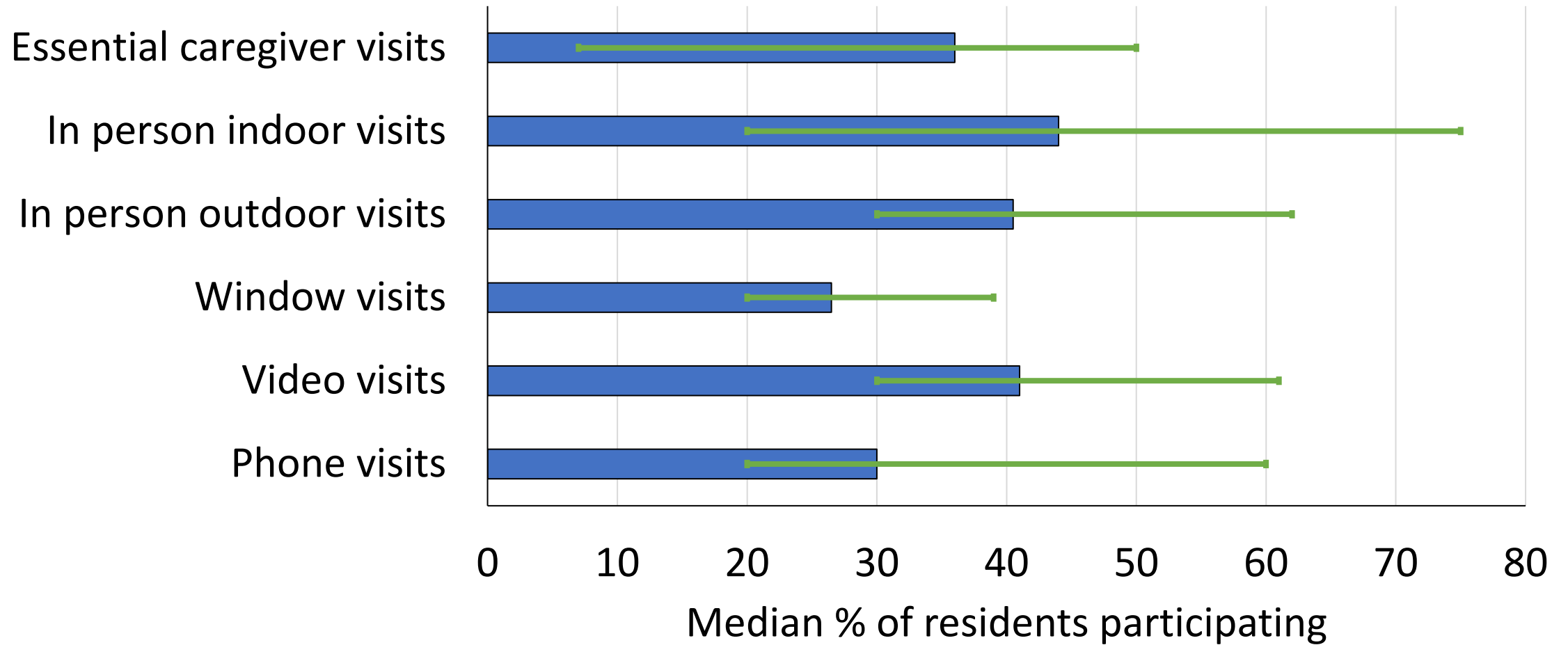
- Monthly snapshots of LTC residents from March 2020 – December 2022
- All residents of LTC homes in SE Ontario

# Survey: who did we hear from?

## Facility characteristics

Classification of home	
A	36.8%
B	21.1%
C	31.6%
D	10.5%
Status	
Municipal	31.6%
Non-profit	10.5%
For profit	57.9%
Number of beds	
0-75	26.3%
76-150	42.1%
More than 150	31.6%

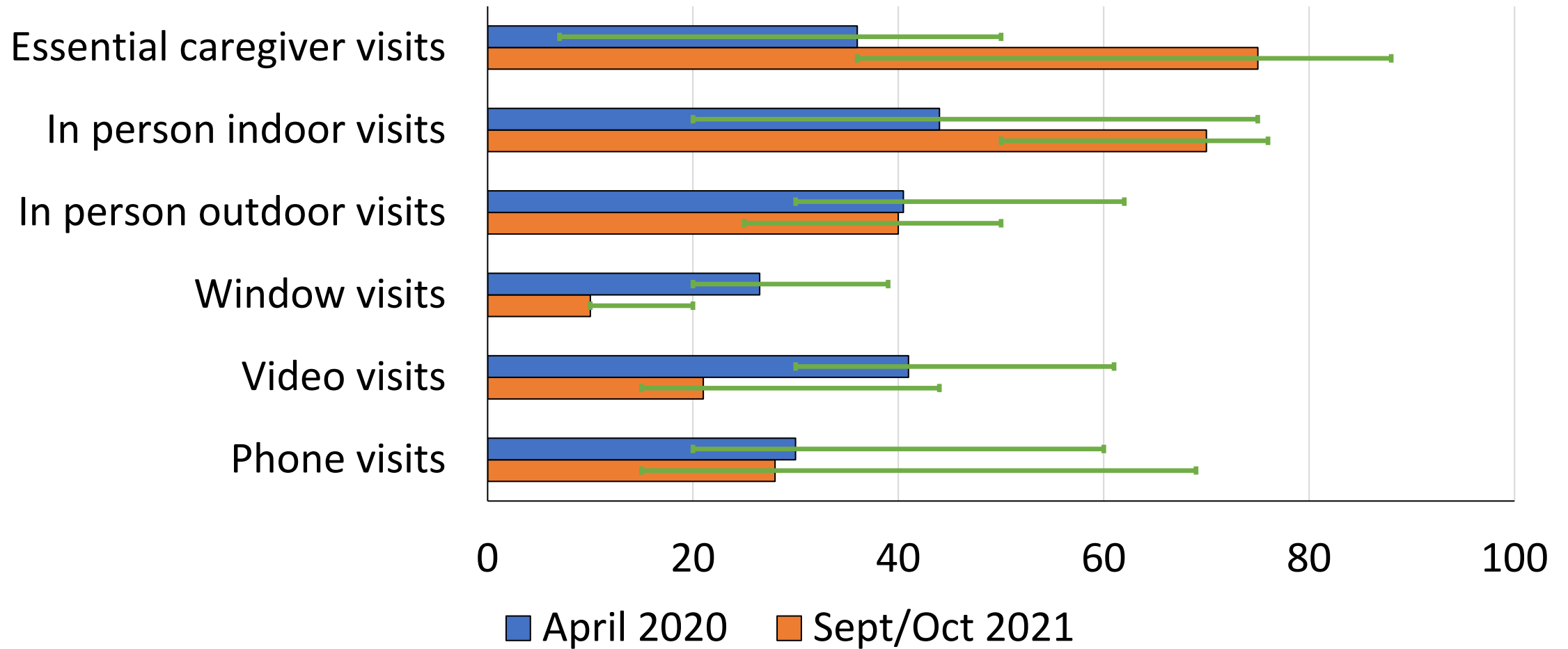
# In April 2020...



Green line indicates interquartile range (from 25<sup>th</sup> percentile to 75<sup>th</sup> percentile)

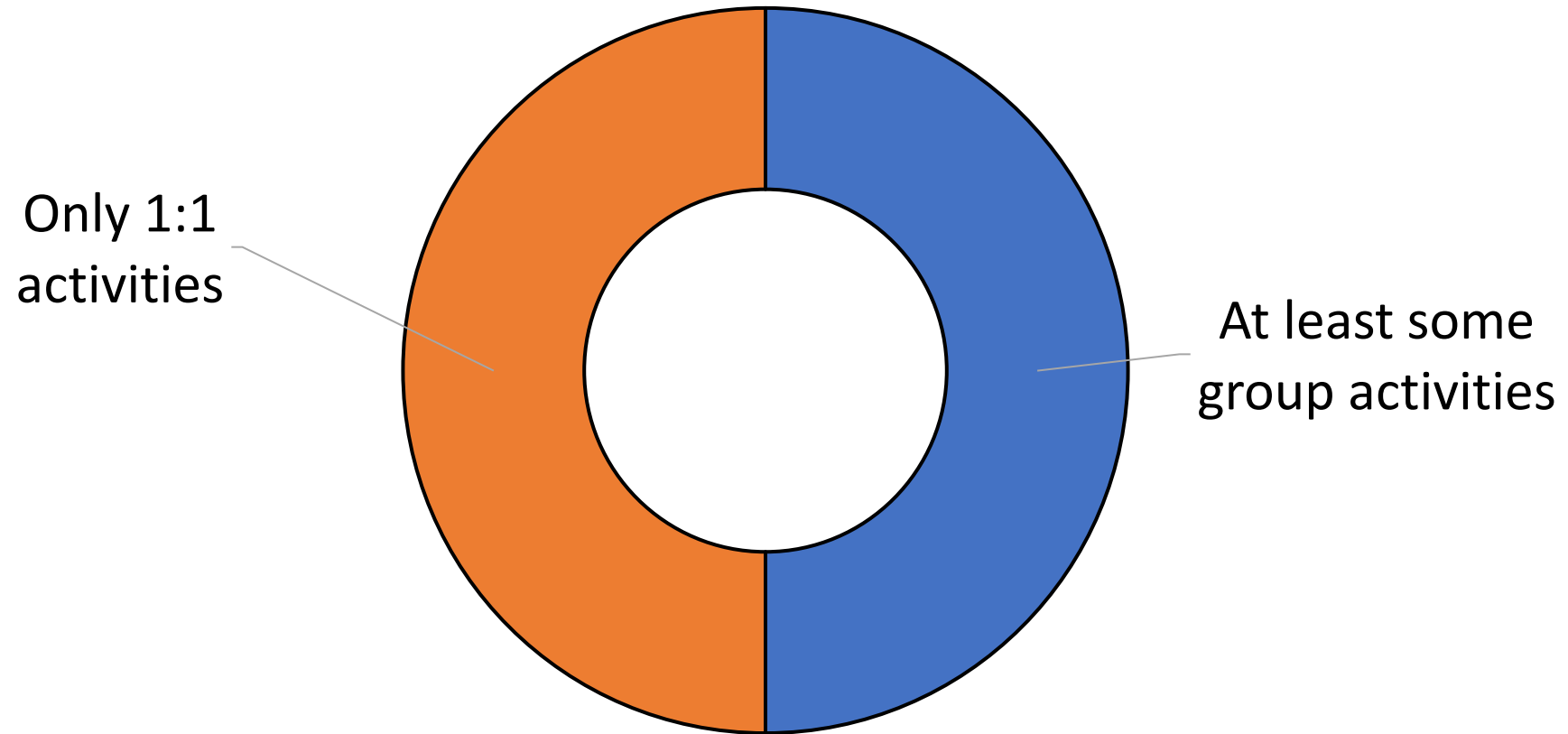


# April 2020 compared to Sept/Oct 2021

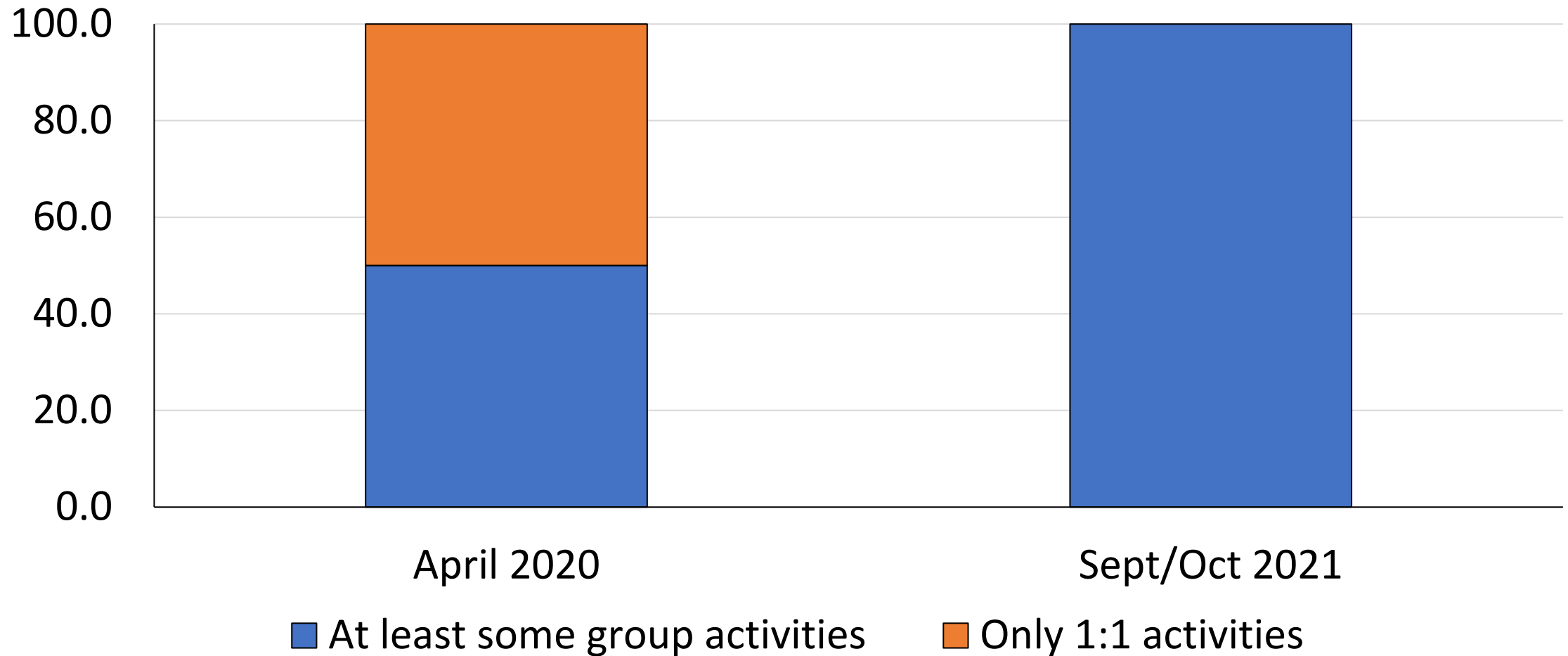


Green line indicates interquartile range (from 25<sup>th</sup> percentile to 75<sup>th</sup> percentile)

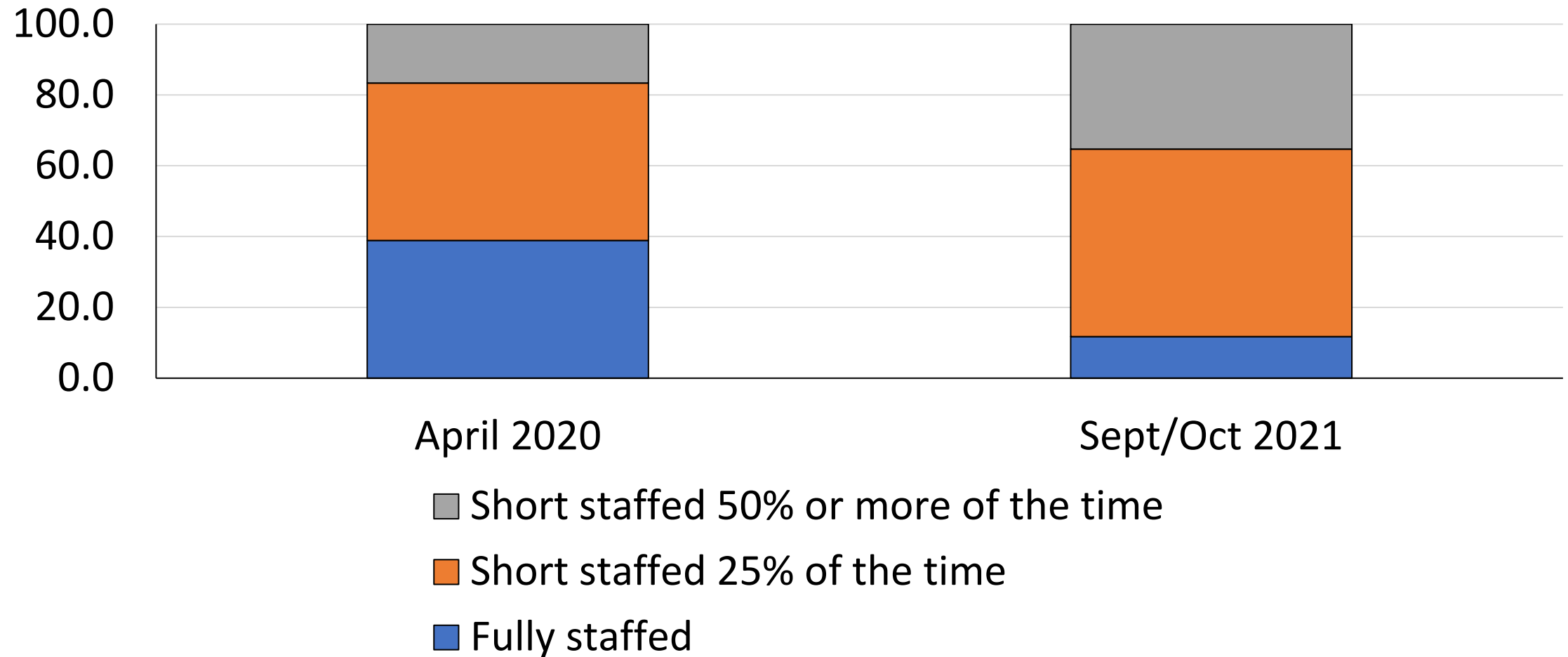
# In April 2020...



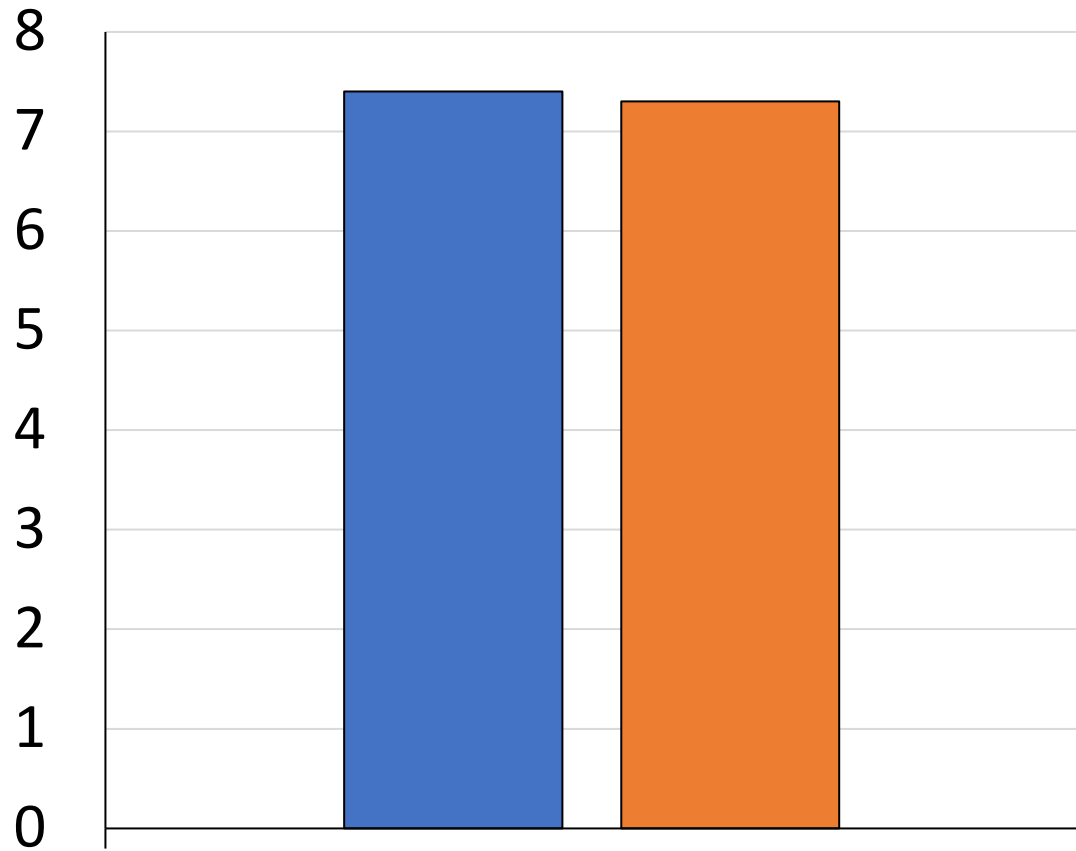
# April 2020 compared to Sept/Oct 2021



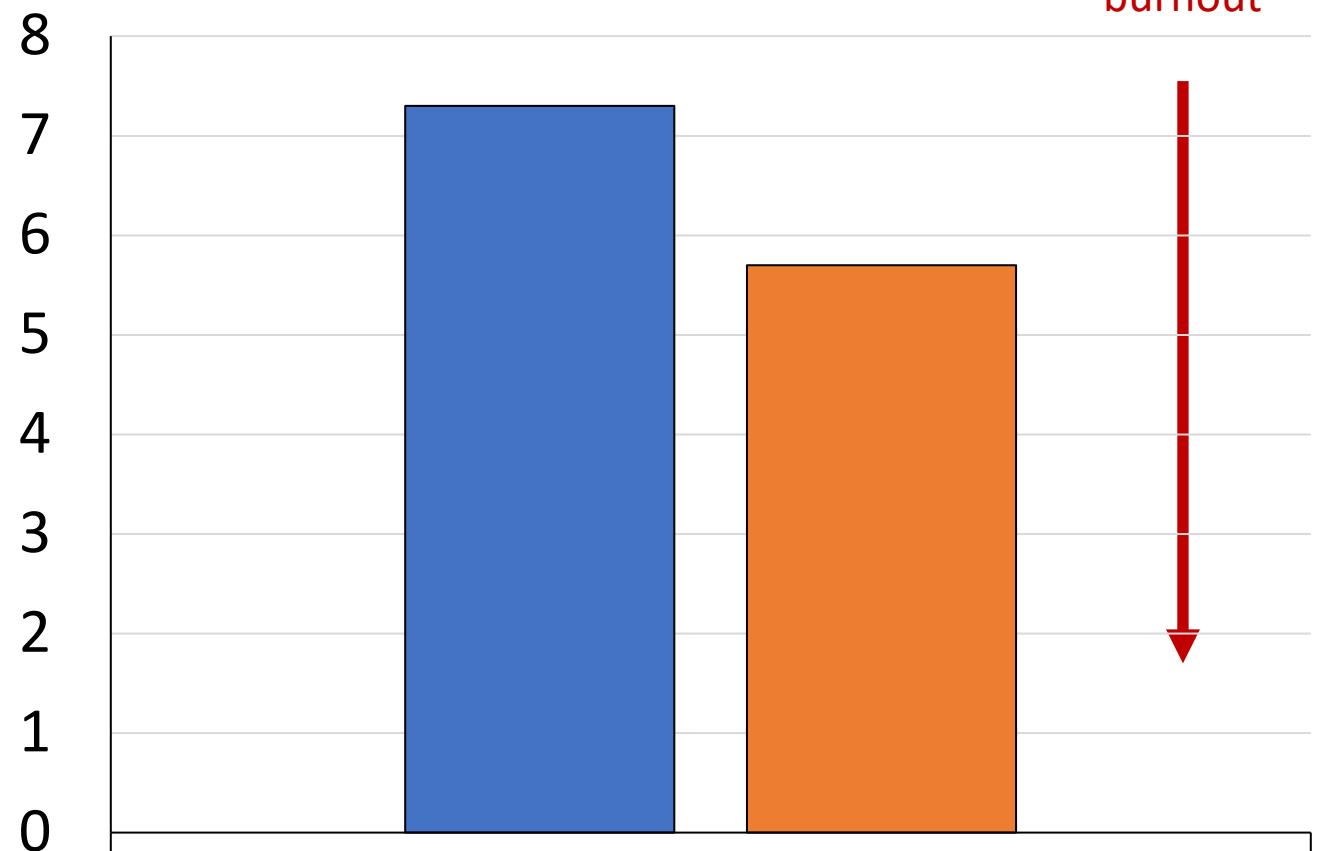
# Staffing levels



# Staff burnout/fatigue



Ability of staff to manage workload



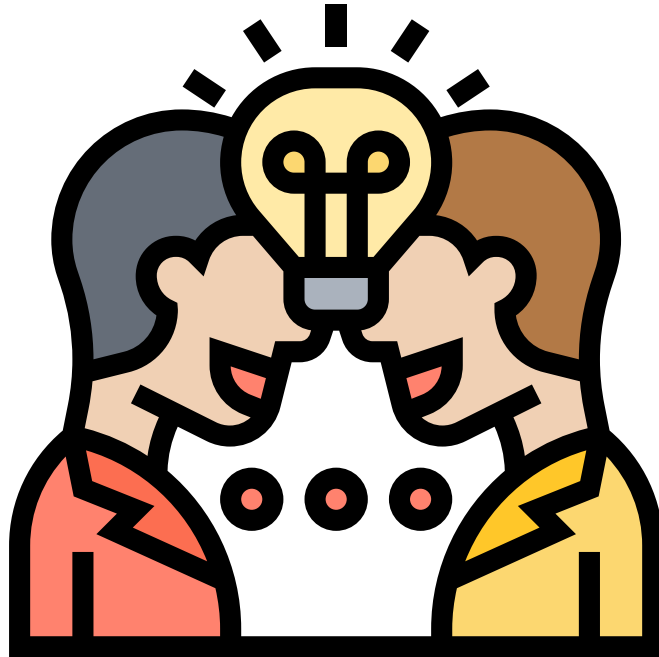
Lower value –  
higher levels of  
burnout

Level of burnout and fatigue

■ April 2020

■ Sept/Oct 2021

# What are your thoughts?



# Snapshots of resident health and wellness

March 2020



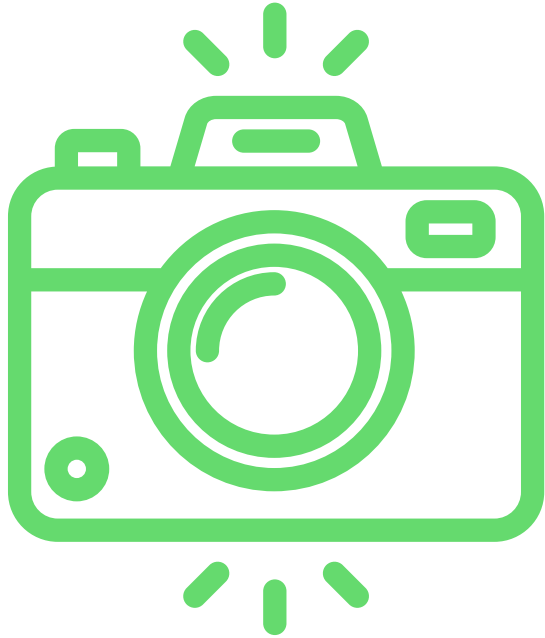
April 2020



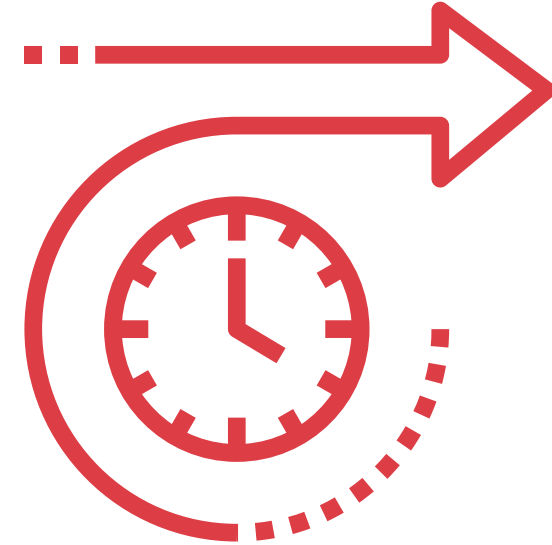
May 2020



# Strengths and limitations



Attempt to capture  
experience on the ground  
throughout pandemic



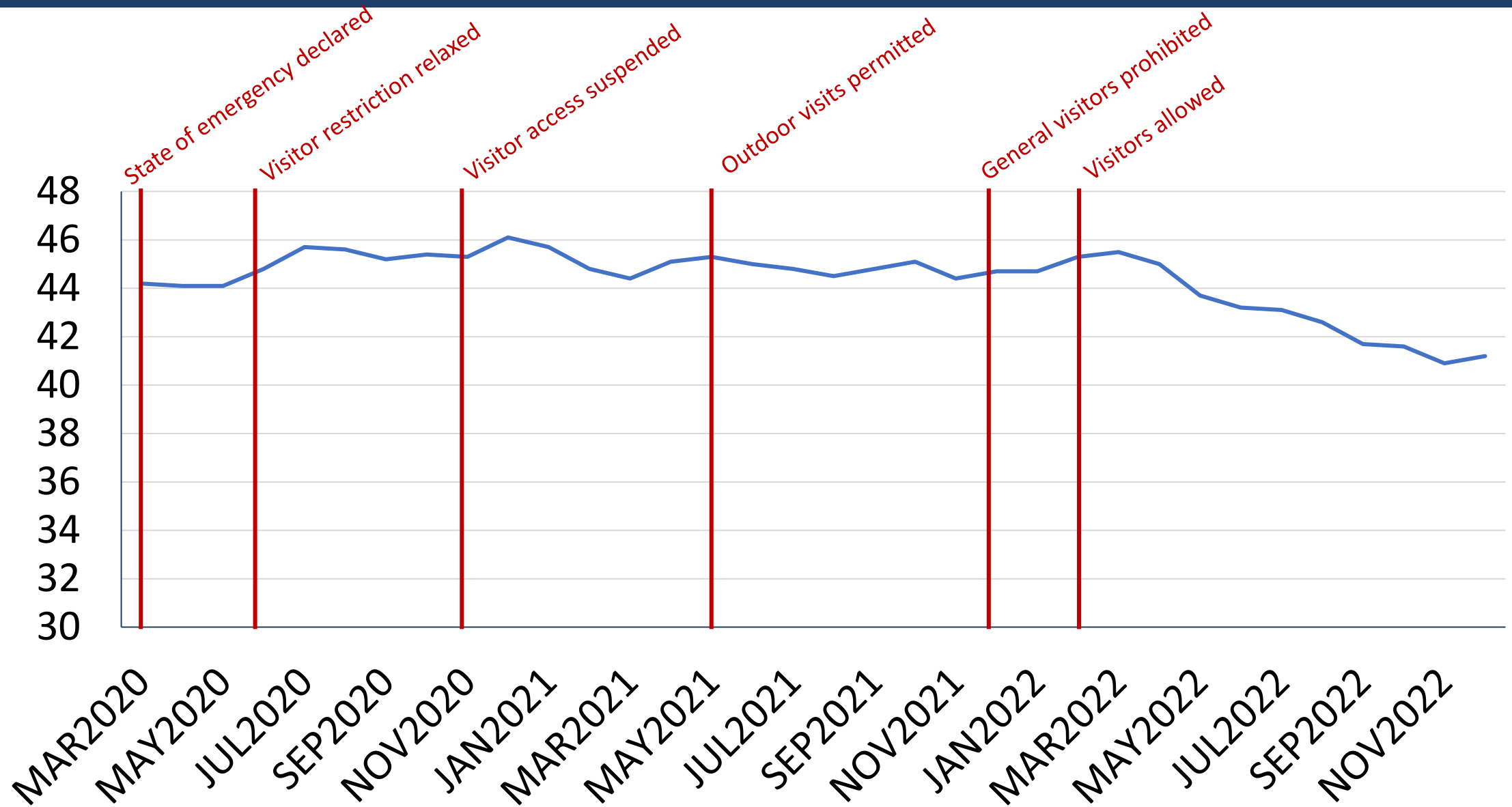
Residents change over  
time; doesn't track direct  
impact of restrictions



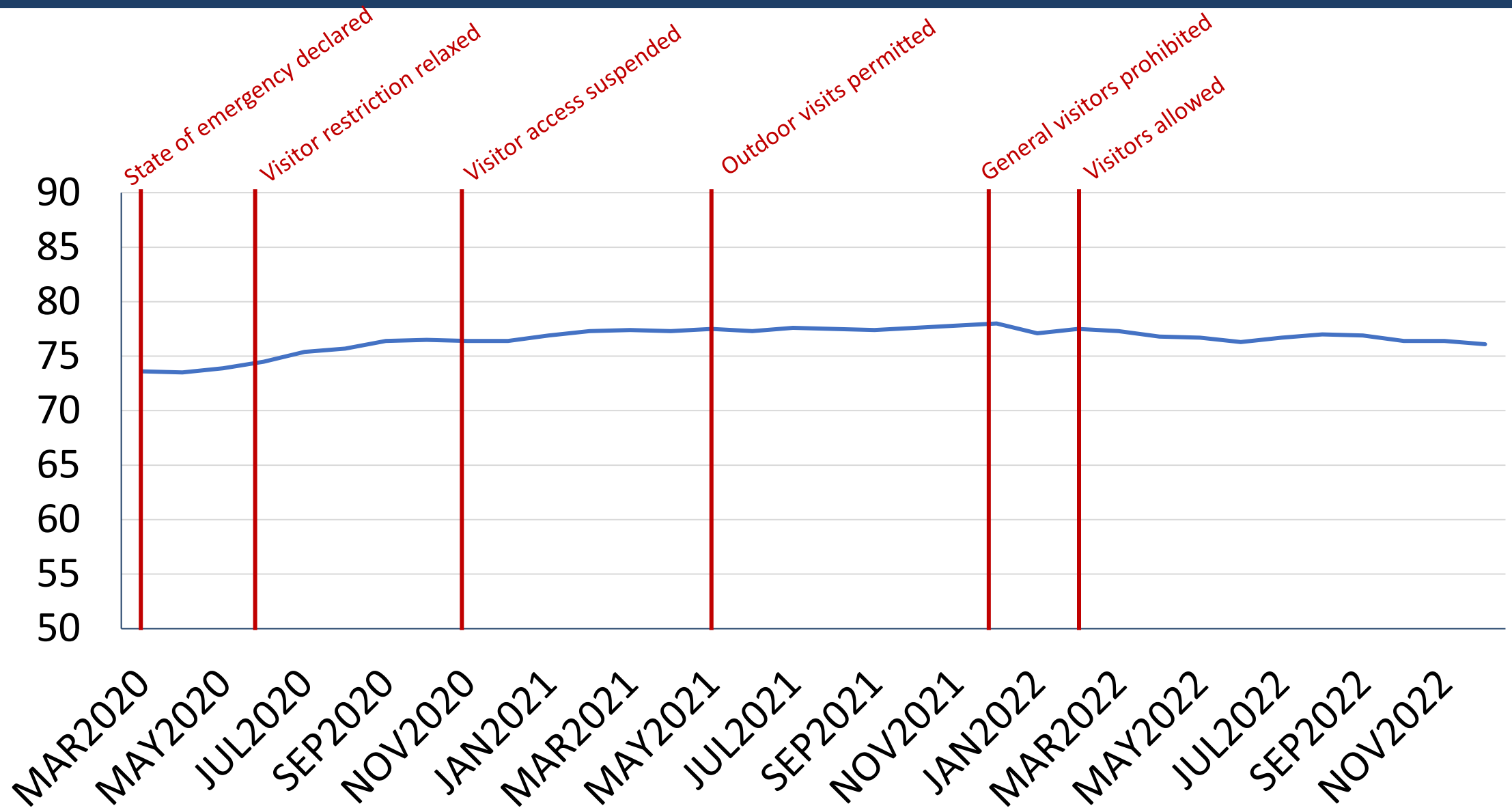
# Health instability (CHESS score $\geq 2$ )



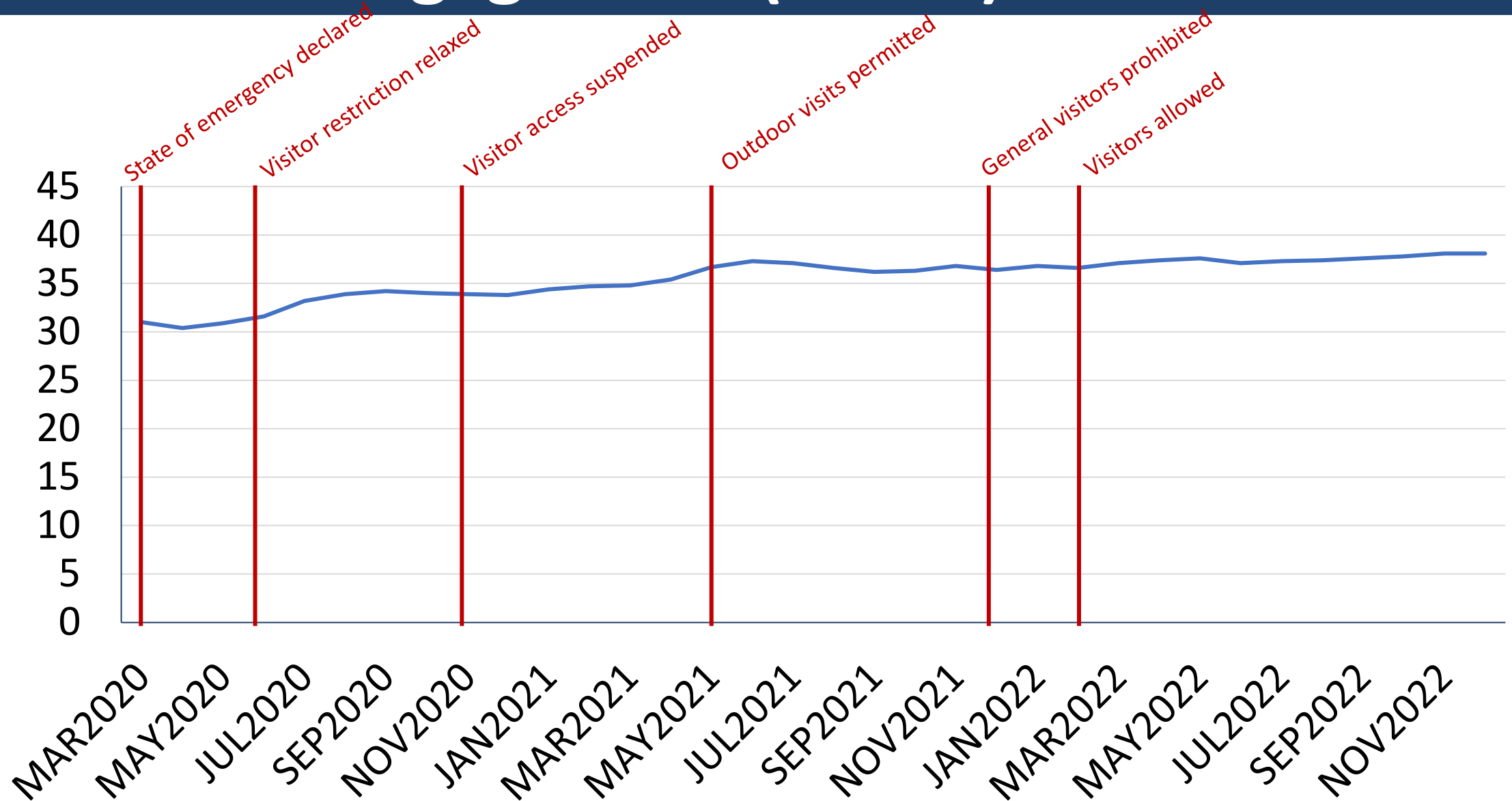
# Depression (DRS $\geq 3$ )



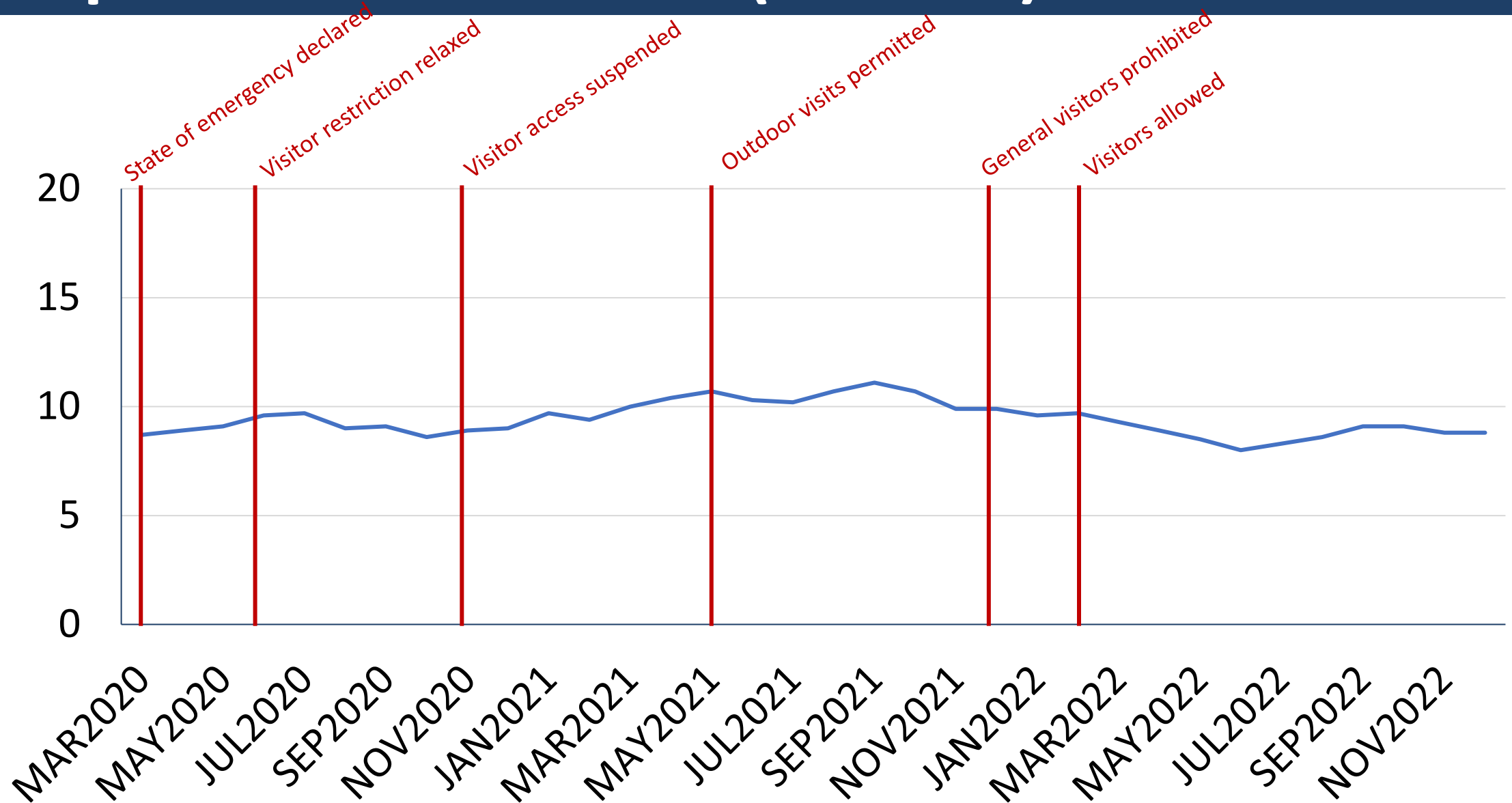
# Cognitive impairment (CPS $\geq 3$ )



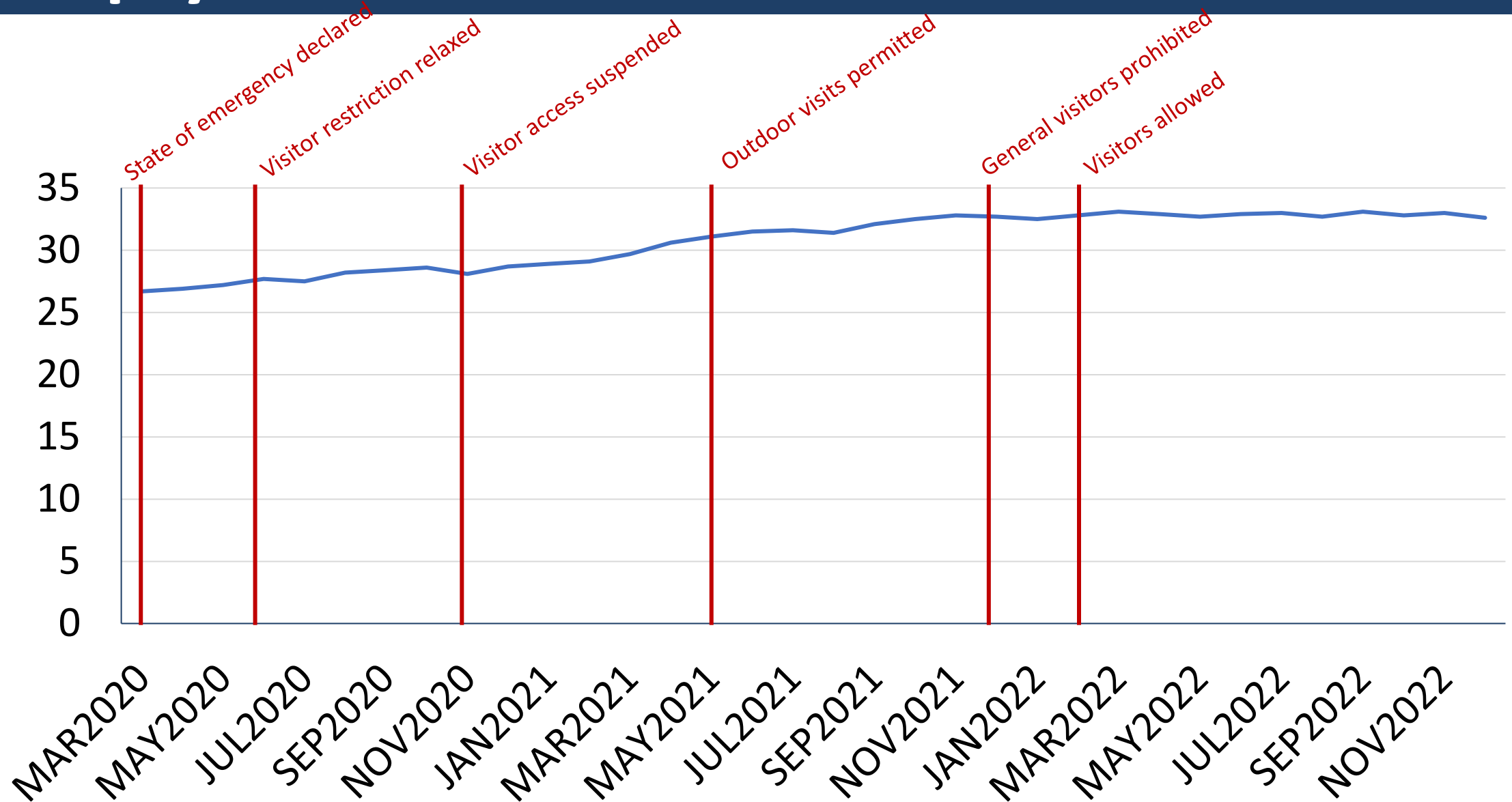
# Low social engagement (ISE $\leq 2$ )



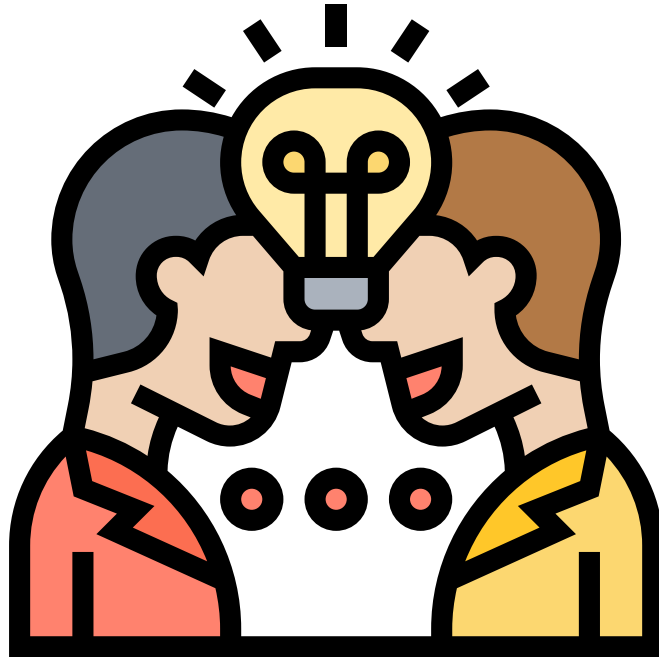
# Responsive behaviours (ABS $\geq 5$ )



# Antipsychotic use



# What are your thoughts?



# Next steps

- Facility specific report for homes who participated in the pilot survey (n=19)
- Ontario-wide project



# Ontario wide study objectives



## **Linking survey data to health data:**

Understand if LTC facilities were able to operationalize physical distancing measures in ways to maintain social connectivity and assess if these differential levels of social isolation impacted resident health and wellness



## **Interviews with residents, care partners, and Directors of Care:**

Understand the experience and impact of the physical distancing restrictions on patients, families, and caregivers



## **Deliberative dialogues with all stakeholders (residents, care partners, health care providers, government):**

Provide recommendations to balance the need for social connection while minimizing risk of infection.

# Acknowledgements

Adhanom Baraki

Andrew Forbes

Sarah Fitzgerald

CIHR Study Team:

Rachelle Ashcroft

Andrea Gruneir

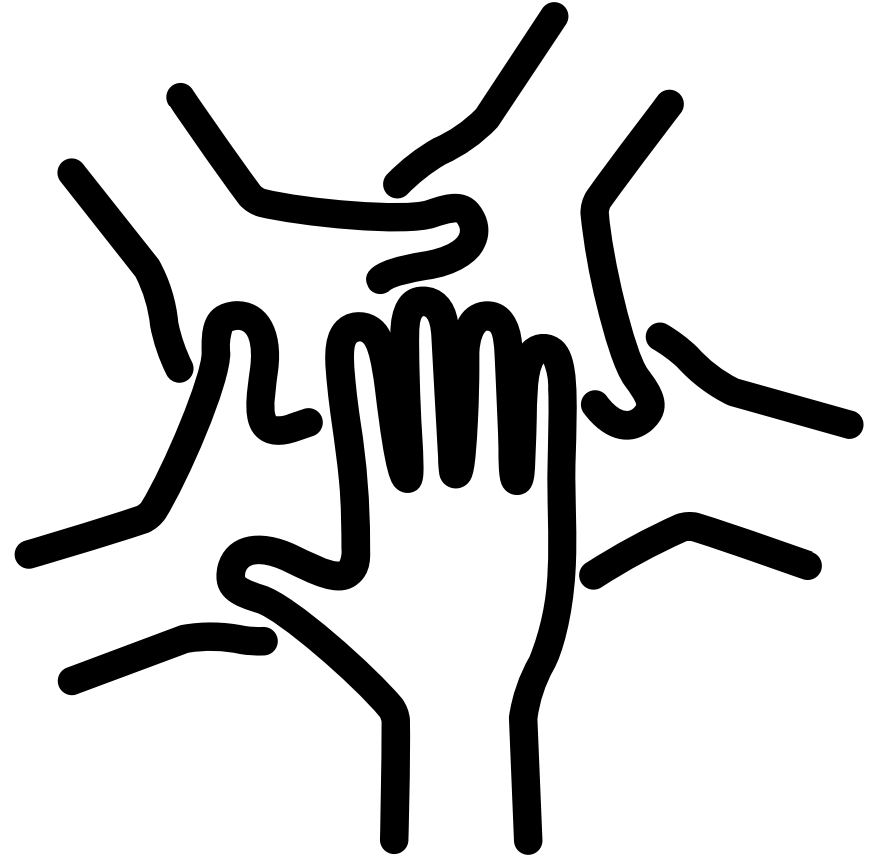
Ana Johnson

Colleen Maxwell

Dallas Seitz

Matthias Hoben

**Carol Smith**





Kim Schryburt-Brown

[schrybuk@providencecare.ca](mailto:schrybuk@providencecare.ca)

Dr. Morgan Slater

[morgan.slater@queensu.ca](mailto:morgan.slater@queensu.ca)

Dr. Catherine Donnelly

[catherine.Donnelly@queensu.ca](mailto:catherine.Donnelly@queensu.ca)