

# **Projected Prevalence of Dementia: Ontario's Local Health Integration Networks**



*April 2007*



*Alzheimer Knowledge Exchange*

**Alzheimer Society**  
ONTARIO

## TABLE OF CONTENTS

<b>INTRODUCTION .....</b>	<b>3</b>
Dementia Projections, Ontario .....	4
Growth Rates in Dementia and Seniors’ Populations .....	5
Dementia Projections by Five-Year Age Group .....	6
Dementia Projections by Gender, 2006.....	8
Dementia as a Percentage of Seniors, by Age Group .....	9
Dementia as a Percentage of Seniors, by Year .....	10
Dementia Projections, by LHIN .....	11
Ten-year Increase in Dementia Cases, by LHIN .....	13
Growth Rate in Dementia, by LHIN.....	15
Difference in Dementia and Seniors’ Growth Rates, by LHIN .....	17
<b>SECTION 2: DATA TABLES FOR ONTARIO AND THE LHINS .....</b>	<b>18</b>
Dementia Projections .....	18
Ontario: Dementia Projections .....	19
LHIN 1 - Erie St. Clair: Dementia Projections.....	21
LHIN 2- South West: Dementia Projections.....	22
LHIN 3 – Waterloo Wellington: Dementia Projections.....	24
LHIN 4 – Hamilton Niagara Haldimand Brant: Dementia Projections.....	25
LHIN 5 – Central West: Dementia Projections.....	26
LHIN 6 – Mississauga Halton: Dementia Projections .....	27
LHIN 7 – Toronto Central: Dementia Projections.....	28
LHIN 8 - Central: Dementia Projections.....	29
LHIN 9 – Central East: Dementia Projections .....	30
LHIN 10 – South East: Dementia Projections.....	31
LHIN 11 - Champlain: Dementia Projections.....	32
LHIN 12 – North Simcoe Muskoka: Dementia Projections .....	33
LHIN 13 – North East: Dementia Projections.....	34
LHIN 14 – North West: Dementia Projections .....	35
All LHINs: Summary dementia projections, both sexes .....	36
<b>APPENDIX 1: METHODOLOGY .....</b>	<b>37</b>
<b>APPENDIX 2: LOCAL HEALTH INTEGRATION NETWORKS .....</b>	<b>38</b>

## PROJECTED PREVALENCE OF DEMENTIA: ONTARIO'S LOCAL HEALTH INTEGRATION NETWORKS

### INTRODUCTION

The following charts and tables have been calculated using population projections for Ontario's Local Health Integration Networks (LHINs) from the Ministry of Finance for the Ministry of Health and Long-Term Care (revised September 2006) and dementia rates from the Canadian Study of Health and Aging conducted in 1991 (see Appendix 1 for the methodology).<sup>1</sup>

In this report, "dementia" includes Alzheimer's disease and related dementias. The data tables identify the projected prevalence of dementia in each LHIN for seniors over the age of 65 years, by age group and gender, between 2006 and 2016. Ontario-wide charts have been developed using these dementia projections as an example of the analyses that could be conducted for each LHIN.

While dementia is commonly associated with aging and these dementia projections and methodology apply to people over 65 years of age, they do not represent the total number of people with dementia. There are also some younger people with dementia, and work is under way to acquire more accurate estimates of how many people under 65 have dementia.

These dementia prevalence projections based on LHIN boundaries draw on the work of Dr. Robert W. Hopkins and Julia F. Hopkins who have calculated dementia projections for other administrative divisions of Ontario (*Dementia Projections for the Counties, Regional Municipalities, and Districts of Ontario*. (2005). Geriatric Psychiatry Programme, Clinical/Research Bulletin No. 15. Kingston, Ontario: PCCC Mental Health Services.) Our thanks to Dr. Hopkins for his guidance and review of these LHIN-based dementia prevalence projections.

This report is available on the public policy webpage on the Alzheimer Society of Ontario's website (<http://www.alzheimerontario.org/>).

The dementia prevalence data by LHIN is also available in an excel spreadsheet by contacting:

[publicpolicy@alzheimeront.org](mailto:publicpolicy@alzheimeront.org)

---

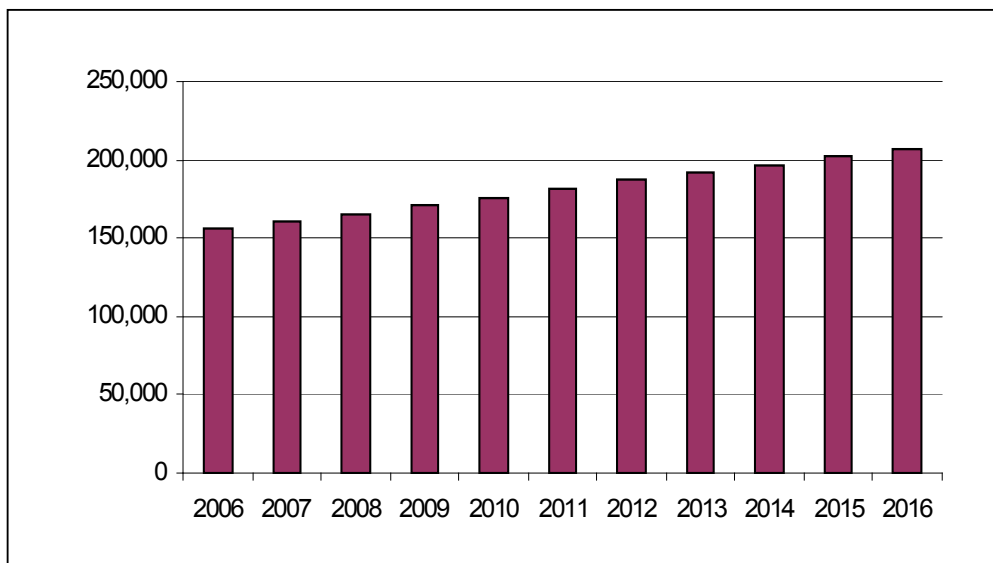
<sup>1</sup> Note that the resulting dementia projections are dependent on the assumptions underlying the population projections and dementia rates.

## Section 1: Ontario Charts and Tables

### Dementia Projections, Ontario

*In 2006 there were over 155,000 people with dementia in Ontario. Ten years later, by 2016, there will be an additional 51,500 people with dementia (over 5,000 per year on average), a **33% increase**.*

**Chart 1**  
**Projected number of people with dementia in Ontario, 2006-2016**



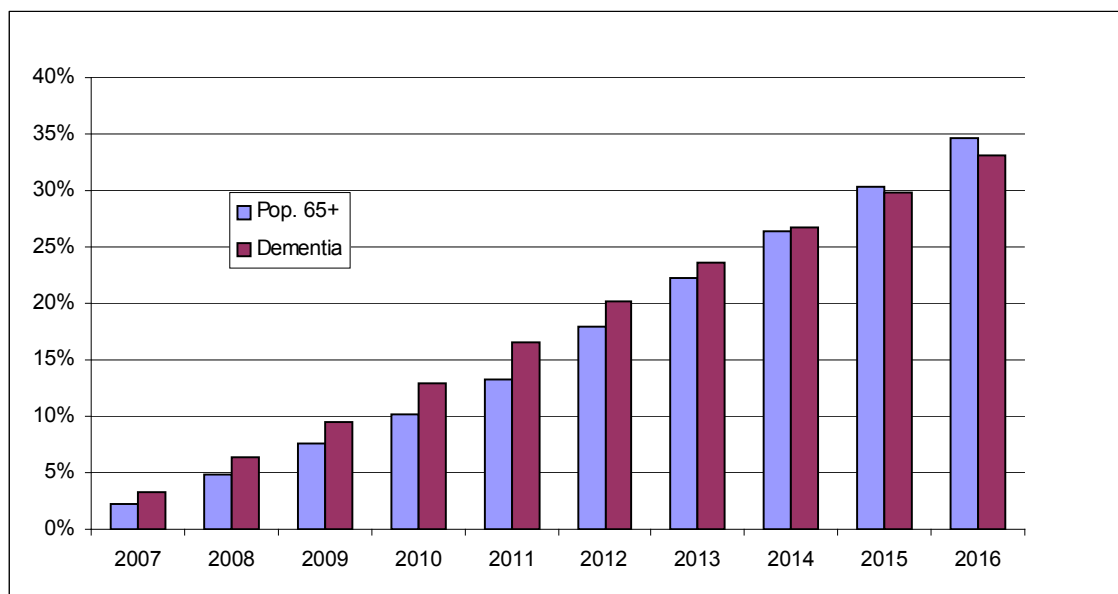
**Table 1**  
**Projected number of people with dementia in Ontario, 2006-2016**

Year	Number	Year-to-year increase	
		No.	%
2006	155,571	5,053	3.2
2007	160,624	4,967	3.1
2008	165,591	4,857	2.9
2009	170,448	5,339	3.1
2010	175,787	5,603	3.2
2011	181,390	5,473	3.0
2012	186,864	5,327	2.9
2013	192,190	4,936	2.6
2014	197,126	4,915	2.5
2015	202,041	5,147	2.5
2016	207,188	5,053	3.2

## Growth Rates in Dementia and Seniors' Populations

For the next eight years, the number of people in Ontario with dementia will increase at a **faster rate** than the number of seniors (aged 65 and over) compared to 2006 levels.

**Chart 2**  
**Percentage increase over 2006, Ontario**  
**Population 65+ and Dementia cases (projections)**



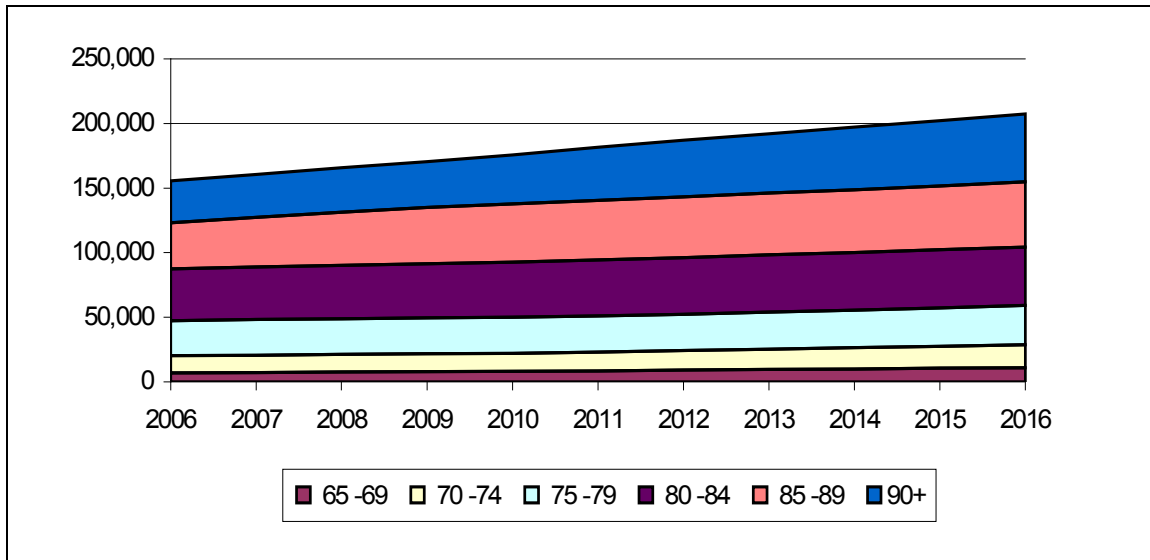
**Table 2**  
**Percentage increase over 2006, Ontario**  
**Population 65+ and Dementia cases (projections)**

Year	Population 65+	Dementia
2006-07	2.3%	3.2%
2007-08	4.9%	6.4%
2008-09	7.6%	9.6%
2009-10	10.2%	13.0%
2010-11	13.3%	16.6%
2011-12	17.9%	20.1%
2012-13	22.2%	23.5%
2013-14	26.3%	26.7%
2014-15	30.4%	29.9%
2015-16	34.6%	33.2%

### Dementia Projections by Five-Year Age Group

*Almost half (40-50%) of people with dementia are aged 85 or over.*

**Chart 3**  
**Number of people with dementia in Ontario, 2006-2016, by five-year age group**



**Table 3a**  
**Percentage of people with dementia in five- and ten-year age groups**  
**2006 and 2016**

Year	Percentage in Five-Year Age Groups						Percentage in Ten-Year Age Groups		
	65 -69	70 -74	75 -79	80 -84	85 -89	90+	64-74	75-84	85+
2006	4.5	8.6	17.4	25.7	23.0	20.8	13.1	43.1	43.8
2016	5.3	8.5	14.8	21.8	24.3	25.3	13.8	36.6	49.6

**Table 3b**  
**Number of people with dementia by five-year age group, Ontario, 2006-2016**

Year	Number in Five-Year Age Group						Total 65+
	65 -69	70 -74	75 -79	80 -84	85 -89	90+	
2006	7,003	13,431	27,030	40,002	35,757	32,348	155,571
2007	7,228	13,486	27,383	40,690	38,518	33,319	160,624
2008	7,519	13,634	27,631	41,376	41,206	34,226	165,591
2009	7,802	13,920	27,786	41,818	43,622	35,500	170,448
2010	8,092	14,191	27,872	42,514	45,145	37,972	175,787
2011	8,454	14,524	28,002	43,269	46,315	40,825	181,390
2012	9,125	15,019	28,179	43,882	47,146	43,514	186,864
2013	9,675	15,652	28,545	44,330	47,981	46,008	192,190
2014	10,158	16,266	29,195	44,614	48,537	48,355	197,126
2015	10,645	16,897	29,814	44,834	49,430	50,423	202,041
2016	11,055	17,680	30,571	45,156	50,407	52,319	207,188

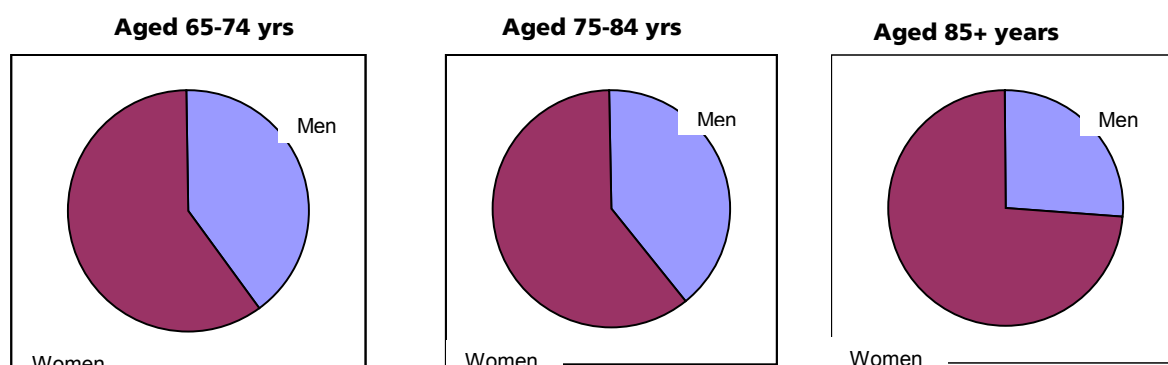
**Table 3c**  
**Percentage of people with dementia in each five-year age group**  
**Ontario, 2006-2016**

Year	Percentage in Five-Year Age Group					
	65 -69	70 -74	75 -79	80 -84	85 -89	90+
2006	4.5	8.6	17.4	25.7	23.0	20.8
2007	4.5	8.4	17.0	25.3	24.0	20.7
2008	4.5	8.2	16.7	25.0	24.9	20.7
2009	4.6	8.2	16.3	24.5	25.6	20.8
2010	4.6	8.1	15.9	24.2	25.7	21.6
2011	4.7	8.0	15.4	23.9	25.5	22.5
2012	4.9	8.0	15.1	23.5	25.2	23.3
2013	5.0	8.1	14.9	23.1	25.0	23.9
2014	5.2	8.3	14.8	22.6	24.6	24.5
2015	5.3	8.4	14.8	22.2	24.5	25.0
2016	5.3	8.5	14.8	21.8	24.3	25.3

### Dementia Projections by Gender, 2006

Women account for the majority of people with dementia in Ontario. The proportion increases with age, rising from two-thirds of those over 65 years with dementia to almost three-quarters of those over 85 years with dementia.

**Chart 4**  
Dementia projections by gender and age group, Ontario, 2006



**Table 4**  
Dementia projections by gender and age group, Ontario, 2006 and 2016

2006	Gender	Aged 65-74 yrs		Aged 74-84 yrs		Aged 85+ yrs		Total 65+ yrs	
		No.	%	No.	%	No.	%	No.	%
	Men	8,161	39.9	26,339	39.3	18,041	26.5	52,541	33.8
	Women	12,273	60.1	40,693	60.7	50,065	73.5	103,030	66.2
	Both sexes	20,434	100.0	67,032	100.0	68,105	100.0	155,571	100.0

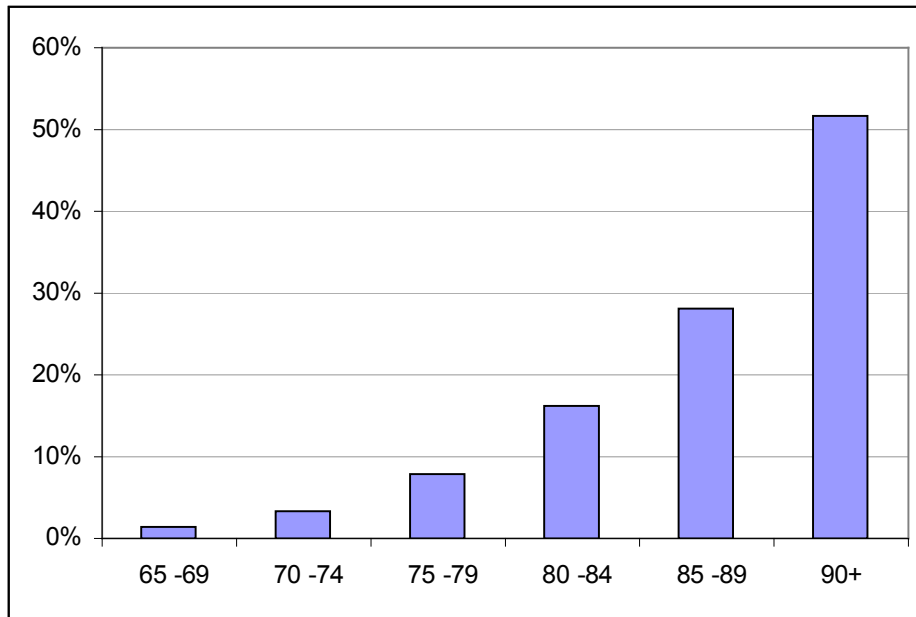
2016	Gender	Aged 65-74 yrs		Aged 74-84 yrs		Aged 85+ yrs		Total 65+ yrs	
		No.	%	No.	%	No.	%	No.	%
	Men	11,420	39.7	31,609	41.7	30,517	29.7	73,546	35.5
	Women	17,315	60.3	44,118	58.3	72,209	70.3	133,643	64.5
	Both sexes	28,735	100.0	75,727	100.0	102,726	100.0	207,188	100.0



### Dementia as a Percentage of Seniors, by Age Group

*On average, dementia affects almost one in ten seniors over 65 years. The prevalence rate increases with age, rising to one in two seniors over 90 years of age.*

**Chart 5**  
**Dementia as a percentage of seniors' population, by five-year age group, average of 2006-2016**



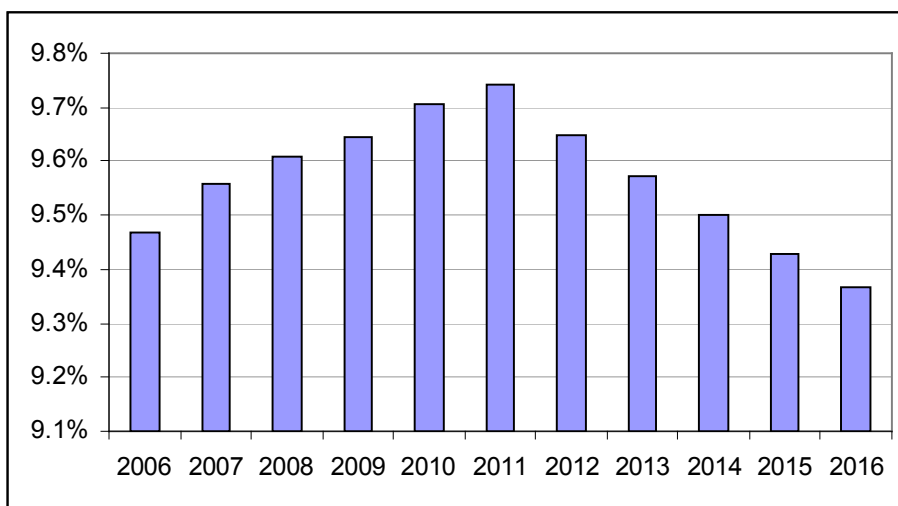
**Table 5**  
**Dementia as a percentage of seniors' population, by five-year age group, average of 2006-2016**

Five-Year Age Group						Average 65+
65 -69	70 -74	75 -79	80 -84	85 -89	90+	
1.5%	3.4%	8.0%	16.1%	28.1%	51.6%	9.6%

### Dementia as a Percentage of Seniors, by Year

*The percentage of seniors aged 65 and over who have dementia will rise rapidly in the immediate future and will peak in 2011.*

**Chart 6**  
**Dementia as a percentage of seniors' population (aged 65+)**  
**Ontario, 2006-2016**



**Table 6**  
**Dementia as a percentage of seniors' population (aged 65+), 2006-2016**

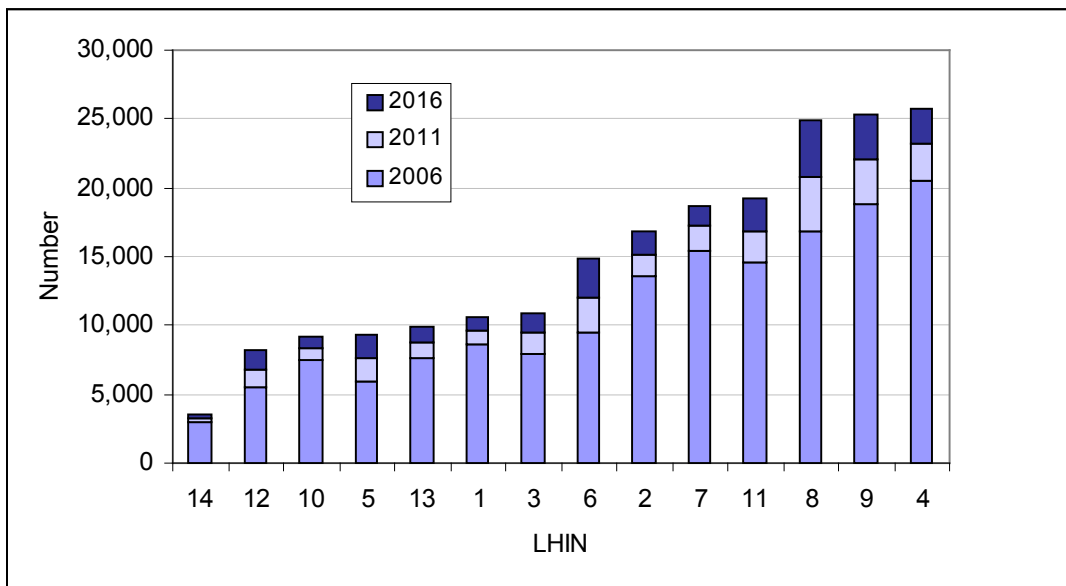
Year	Dementia/ Seniors %
2006	9.47
2007	9.56
2008	9.61
2009	9.64
2010	9.71
2011	9.74
2012	9.65
2013	9.57
2014	9.50
2015	9.43
2016	9.37

### Dementia Projections, by LHIN

By 2016, the three LHINs with the highest prevalence will each have to care for about 25,000 people with dementia:

- LHIN 4: Hamilton Niagara Haldimand Brant
- LHIN 9: Central East
- LHIN 8: Central.

**Chart 7**  
**Projected number of people with dementia, ranked by LHIN**  
**2006, 2011 and 2016**



**Table 7**  
**Projected number of people with dementia, by LHIN, 2006-2016**

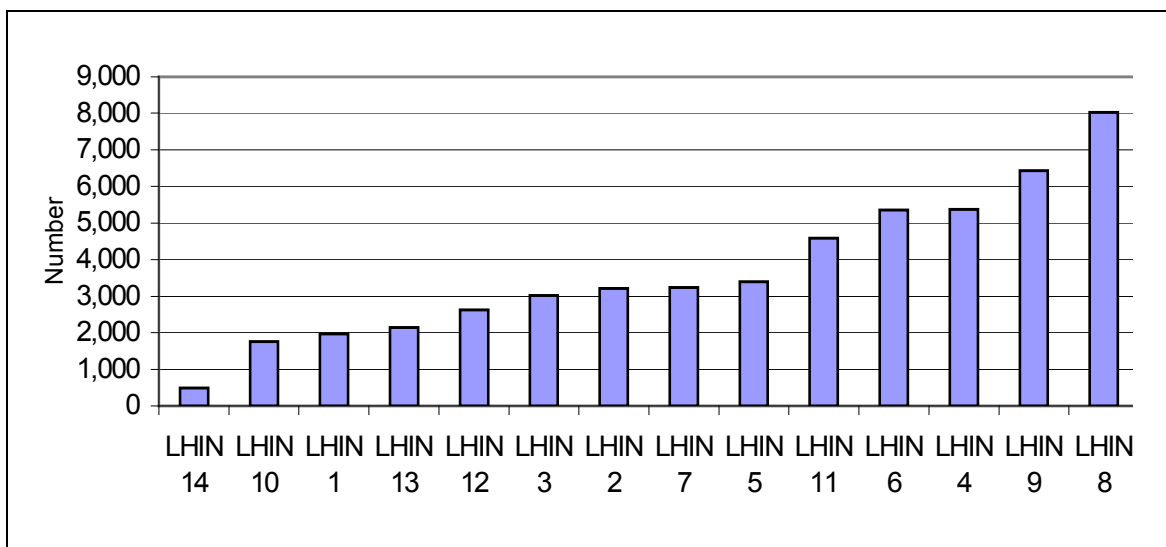
Year	LHIN						
	1	2	3	4	5	6	7
2006	8,623	13,600	7,930	20,452	5,991	9,426	15,471
2007	8,829	13,912	8,240	21,011	6,289	9,950	15,837
2008	9,010	14,209	8,528	21,547	6,600	10,456	16,191
2009	9,210	14,521	8,824	22,049	6,913	10,965	16,510
2010	9,425	14,847	9,140	22,638	7,237	11,519	16,879
2011	9,643	15,190	9,450	23,241	7,598	12,082	17,271
2012	9,857	15,529	9,784	23,830	7,958	12,633	17,612
2013	10,043	15,859	10,091	24,365	8,326	13,175	17,943
2014	10,224	16,183	10,379	24,839	8,681	13,703	18,208
2015	10,410	16,488	10,653	25,319	9,023	14,245	18,455
2016	10,593	16,805	10,942	25,821	9,395	14,788	18,708

Year	LHIN						
	8	9	10	11	12	13	14
2006	16,883	18,837	7,470	14,629	5,552	7,697	3,010
2007	17,631	19,460	7,629	15,067	5,791	7,905	3,073
2008	18,392	20,092	7,795	15,521	6,017	8,107	3,126
2009	19,141	20,708	7,958	15,937	6,254	8,297	3,161
2010	19,969	21,372	8,132	16,381	6,514	8,520	3,214
2011	20,839	22,076	8,322	16,879	6,789	8,745	3,265
2012	21,665	22,763	8,497	17,369	7,062	8,982	3,322
2013	22,497	23,428	8,689	17,868	7,335	9,199	3,371
2014	23,288	24,037	8,865	18,312	7,601	9,398	3,408
2015	24,091	24,631	9,042	18,738	7,881	9,612	3,454
2016	24,905	25,269	9,230	19,215	8,175	9,840	3,501

### Ten-year Increase in Dementia Cases, by LHIN

*In 2016, Central LHIN (8) will have over 8,000 more people with dementia than it had in 2006, the greatest increase in all the LHINs.*

**Chart 8**  
**Increase in number of people with dementia between 2006-2016,**  
**ranked by LHIN**



**Table 8a**  
**Increase in number of people with dementia between 2006-2016, by LHIN**

Year	LHIN						
	1	2	3	4	5	6	7
2006-16	1,971	3,205	3,012	5,369	3,404	5,362	3,237

Year	LHIN						
	8	9	10	11	12	13	14
2006-16	8,023	6,432	1,760	4,585	2,623	2,143	491

Dementia prevalence projections – LHINs- Alzheimer Society of Ontario

**Table 8b**  
**Projected increase in number of people with dementia each year,**  
**by LHIN, 2006-2016**

Year	LHIN						
	1	2	3	4	5	6	7
2006-07	207	311	310	559	298	524	366
2007-08	180	298	288	536	311	506	354
2008-09	200	312	296	502	313	509	319
2009-10	215	325	316	589	324	555	368
2010-11	218	343	310	602	361	562	392
2011-12	213	339	334	589	360	552	341
2012-13	186	330	307	536	368	541	330
2013-14	181	324	287	474	355	528	265
2014-15	186	305	274	480	342	542	247
2015-16	183	317	290	502	372	544	253

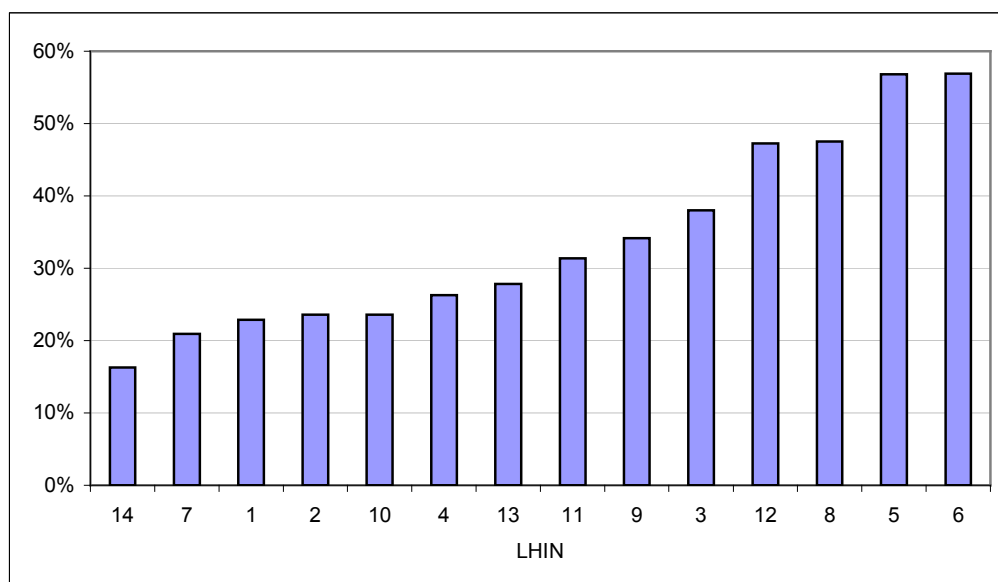
Year	LHIN						
	8	9	10	11	12	13	14
2006-07	748	623	159	438	239	209	62
2007-08	761	632	166	454	226	201	53
2008-09	749	616	163	415	237	190	35
2009-10	828	664	174	445	260	223	53
2010-11	870	704	190	498	276	225	51
2011-12	826	687	174	490	273	237	57
2012-13	831	665	193	499	273	217	49
2013-14	792	608	176	444	265	199	36
2014-15	802	594	177	425	280	214	46
2015-16	814	638	188	477	294	227	47

### Growth Rate in Dementia, by LHIN

The top four LHINs are projected to have an average of over 50% more people with dementia in 2016 than they did in 2006:

- LHIN 6 (Mississauga Halton): 57%
- LHIN 5 (Central West): 57%
- LHIN 8 (Central): 47%
- LHIN 12 (North Simcoe Muskoka): 47%

**Chart 9**  
**Percentage increase in dementia cases between 2006-2016, ranked by LHIN**



**Table 9a**  
**Percentage increase in dementia cases between 2006-2016, by LHIN**

Year	LHIN						
	1	2	3	4	5	6	7
2006-16	22.9%	23.6%	38.0%	26.3%	56.8%	56.9%	20.9%

Year	LHIN						
	8	9	10	11	12	13	14
2006-16	47.5%	34.1%	23.6%	31.3%	47.3%	27.8%	16.3%

Dementia prevalence projections – LHINs- Alzheimer Society of Ontario

**Table 9b**  
**Percentage increase in dementia cases from year to year, 2006-2016, by LHIN**

Year	LHIN						
	1	2	3	4	5	6	7
2006-07	2.4%	2.3%	3.9%	2.7%	5.0%	5.6%	2.4%
2007-08	2.0%	2.1%	3.5%	2.6%	4.9%	5.1%	2.2%
2008-09	2.2%	2.2%	3.5%	2.3%	4.7%	4.9%	2.0%
2009-10	2.3%	2.2%	3.6%	2.7%	4.7%	5.1%	2.2%
2010-11	2.3%	2.3%	3.4%	2.7%	5.0%	4.9%	2.3%
2011-12	2.2%	2.2%	3.5%	2.5%	4.7%	4.6%	2.0%
2012-13	1.9%	2.1%	3.1%	2.2%	4.6%	4.3%	1.9%
2013-14	1.8%	2.0%	2.8%	1.9%	4.3%	4.0%	1.5%
2014-15	1.8%	1.9%	2.6%	1.9%	3.9%	4.0%	1.4%
2015-16	1.8%	1.9%	2.7%	2.0%	4.1%	3.8%	1.4%

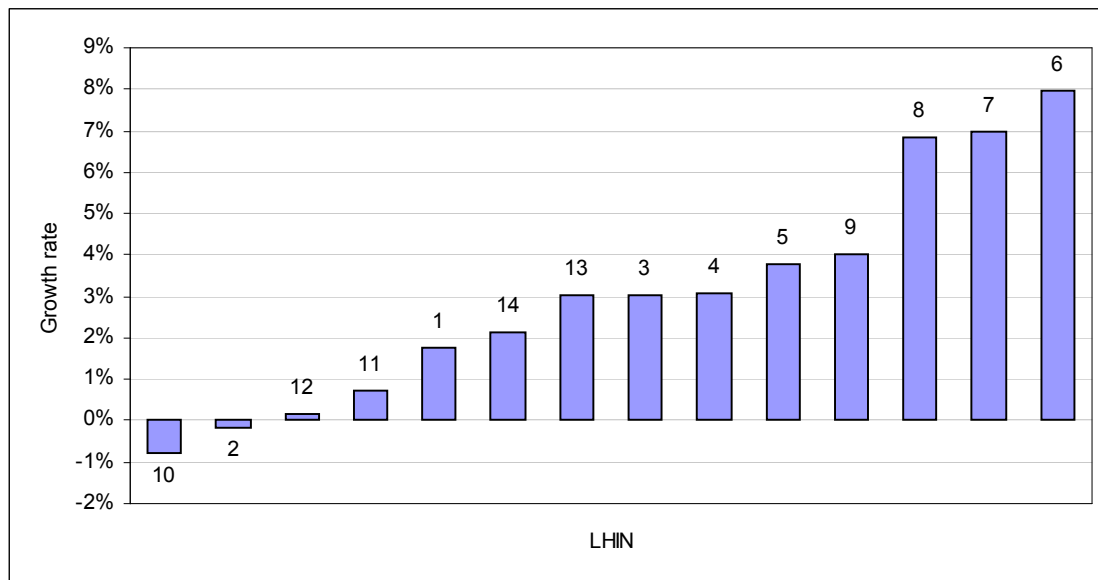
Year	LHIN						
	8	9	10	11	12	13	14
2006-07	4.4%	3.3%	2.1%	3.0%	4.3%	2.7%	2.1%
2007-08	4.3%	3.2%	2.2%	3.0%	3.9%	2.5%	1.7%
2008-09	4.1%	3.1%	2.1%	2.7%	3.9%	2.3%	1.1%
2009-10	4.3%	3.2%	2.2%	2.8%	4.2%	2.7%	1.7%
2010-11	4.4%	3.3%	2.3%	3.0%	4.2%	2.6%	1.6%
2011-12	4.0%	3.1%	2.1%	2.9%	4.0%	2.7%	1.7%
2012-13	3.8%	2.9%	2.3%	2.9%	3.9%	2.4%	1.5%
2013-14	3.5%	2.6%	2.0%	2.5%	3.6%	2.2%	1.1%
2014-15	3.4%	2.5%	2.0%	2.3%	3.7%	2.3%	1.4%
2015-16	3.4%	2.6%	2.1%	2.5%	3.7%	2.4%	1.4%



### Difference in Dementia and Seniors' Growth Rates, by LHIN

*In most LHINs, over the next five years the number of people with dementia will increase at a faster rate than the total population of seniors (aged 65+).*

**Chart 10**  
**Difference in growth rate in dementia compared to growth rate of population aged 65+ between 2006 and 2011, by LHIN, ranked**



**Table 10**  
**Difference in growth rate in dementia compared to growth rate of population 65+ between 2006 and 2011, by LHIN**

	Growth rate by LHIN						
	1	2	3	4	5	6	7
Pop. 65+	10.1%	11.9%	16.1%	10.6%	23.0%	20.2%	4.7%
Dementia	11.8%	11.7%	19.2%	13.6%	26.8%	28.2%	11.6%
Difference	1.7%	-0.2%	3.0%	3.1%	3.8%	8.0%	7.0%

	Growth rate by LHIN						
	8	9	10	11	12	13	14
Pop. 65+	16.6%	13.2%	12.2%	14.6%	22.1%	10.6%	6.3%
Dementia	23.4%	17.2%	11.4%	15.4%	22.3%	13.6%	8.5%
Difference	6.8%	4.0%	-0.8%	0.7%	0.2%	3.0%	2.1%

## **SECTION 2: DATA TABLES FOR ONTARIO AND THE LHINS**

### **Dementia Projections**

Ontario	
LHIN 1	Erie St. Clair
LHIN 2	South West
LHIN 3	Waterloo Wellington
LHIN 4	Hamilton Niaraga Haldimand Brant
LHIN 5	Central West
LHIN 6	Mississauga Halton
LHIN 8	Central
LHIN 9	Central East
LHIN 10	South East
LHIN 11	Champlain
LHIN 12	North Simcoe Muskoka
LHIN 13	North East
LHIN 14	North West
All LHINs	Summary of dementia projections

Note: The dementia prevalence data by LHIN is also available in an excel spreadsheet by contacting [publicpolicy@alzheimeront.org](mailto:publicpolicy@alzheimeront.org)

### Ontario: Dementia Projections

**Total - Both sexes**

Year	By Age Group						Total
	65 -69	70 -74	75 -79	80 -84	85 -89	90+	
2006	7,003	13,431	27,030	40,002	35,757	32,348	155,571
2007	7,228	13,486	27,383	40,690	38,518	33,319	160,624
2008	7,519	13,634	27,631	41,376	41,206	34,226	165,591
2009	7,802	13,920	27,786	41,818	43,622	35,500	170,448
2010	8,092	14,191	27,872	42,514	45,145	37,972	175,787
2011	8,454	14,524	28,002	43,269	46,315	40,825	181,390
2012	9,125	15,019	28,179	43,882	47,146	43,514	186,864
2013	9,675	15,652	28,545	44,330	47,981	46,008	192,190
2014	10,158	16,266	29,195	44,614	48,537	48,355	197,126
2015	10,645	16,897	29,814	44,834	49,430	50,423	202,041
2016	11,055	17,680	30,571	45,156	50,407	52,319	207,188

**Male**

Year	By Age Group						Total
	65 -69	70 -74	75 -79	80 -84	85 -89	90+	
2006	2,097	6,064	12,415	13,924	10,597	7,444	52,541
2007	2,168	6,086	12,662	14,359	11,511	7,699	54,486
2008	2,262	6,153	12,829	14,812	12,410	7,971	56,438
2009	2,352	6,276	12,946	15,205	13,212	8,343	58,334
2010	2,447	6,395	13,004	15,681	13,810	9,083	60,420
2011	2,564	6,549	13,065	16,180	14,329	9,948	62,635
2012	2,770	6,788	13,153	16,558	14,836	10,733	64,837
2013	2,937	7,095	13,337	16,826	15,365	11,488	67,048
2014	3,083	7,391	13,638	17,020	15,829	12,179	69,139
2015	3,223	7,700	13,933	17,152	16,395	12,860	71,264
2016	3,341	8,079	14,308	17,300	16,993	13,524	73,546

**Female**

Dementia prevalence projections – LHINs- Alzheimer Society of Ontario

Year	By Age Group						Total
	65 -69	70 -74	75 -79	80 -84	85 -89	90+	
2006	4,906	7,367	14,614	26,078	25,160	24,904	103,030
2007	5,060	7,400	14,721	26,330	27,007	25,621	106,138
2008	5,257	7,481	14,801	26,564	28,796	26,255	109,154
2009	5,450	7,644	14,841	26,613	30,410	27,157	112,114
2010	5,645	7,796	14,868	26,833	31,336	28,889	115,367
2011	5,891	7,975	14,937	27,089	31,987	30,877	118,756
2012	6,355	8,231	15,026	27,324	32,310	32,781	122,027
2013	6,738	8,557	15,208	27,505	32,616	34,519	125,143
2014	7,075	8,875	15,557	27,594	32,709	36,176	127,987
2015	7,422	9,197	15,881	27,681	33,034	37,563	130,778
2016	7,714	9,601	16,262	27,856	33,414	38,795	133,643

Dementia prevalence projections – LHINs- Alzheimer Society of Ontario

**LHIN 1 - Erie St. Clair: Dementia Projections**

**Total - Both sexes**

Year	By Age Group						Total
	65 -69	70 -74	75 -79	80 -84	85 -89	90+	
2006	375	717	1,512	2,288	1,998	1,733	8,623
2007	388	718	1,504	2,298	2,160	1,762	8,829
2008	400	728	1,494	2,318	2,288	1,782	9,010
2009	415	738	1,487	2,315	2,411	1,844	9,210
2010	430	750	1,472	2,330	2,501	1,941	9,425
2011	446	768	1,470	2,344	2,539	2,077	9,643
2012	478	797	1,475	2,336	2,548	2,223	9,857
2013	505	825	1,499	2,324	2,567	2,324	10,043
2014	528	858	1,523	2,316	2,564	2,435	10,224
2015	551	892	1,552	2,302	2,586	2,528	10,410
2016	572	928	1,592	2,305	2,606	2,590	10,593

**Male**

Year	By Age Group						Total
	65 -69	70 -74	75 -79	80 -84	85 -89	90+	
2006	112	323	699	755	545	360	2,794
2007	116	323	695	787	592	352	2,865
2008	121	327	694	811	631	357	2,941
2009	127	332	692	830	663	375	3,018
2010	132	337	681	856	699	399	3,104
2011	138	344	679	869	724	438	3,193
2012	147	358	682	868	758	469	3,283
2013	155	375	692	869	782	498	3,371
2014	162	392	705	869	803	522	3,453
2015	168	410	719	860	831	552	3,539
2016	175	428	737	861	848	579	3,629

**Female**

Year	By Age Group						Total
	65 -69	70 -74	75 -79	80 -84	85 -89	90+	
2006	263	394	813	1,532	1,453	1,374	5,828
2007	272	394	808	1,511	1,568	1,410	5,964
2008	279	401	801	1,507	1,657	1,425	6,069
2009	288	406	795	1,485	1,749	1,470	6,192
2010	298	413	791	1,475	1,803	1,542	6,321
2011	308	423	790	1,474	1,814	1,639	6,450
2012	331	439	792	1,468	1,790	1,753	6,574
2013	350	450	807	1,456	1,785	1,826	6,673
2014	367	466	818	1,447	1,762	1,913	6,772
2015	382	482	833	1,442	1,755	1,976	6,871
2016	396	500	855	1,444	1,758	2,011	6,965

### LHIN 2- South West: Dementia Projections

**Total - Both sexes**

Year	By Age Group						Total
	65 -69	70 -74	75 -79	80 -84	85 -89	90+	
2006	556	1,086	2,224	3,375	3,033	2,994	13,600
2007	571	1,084	2,261	3,390	3,238	3,056	13,912
2008	597	1,088	2,268	3,434	3,409	3,115	14,209
2009	622	1,107	2,269	3,461	3,595	3,155	14,521
2010	646	1,139	2,254	3,480	3,767	3,235	14,847
2011	671	1,164	2,240	3,528	3,851	3,392	15,190
2012	697	1,198	2,241	3,592	3,876	3,585	15,529
2013	746	1,253	2,254	3,606	3,928	3,743	15,859
2014	786	1,307	2,298	3,615	3,961	3,893	16,183
2015	821	1,358	2,368	3,596	3,990	4,050	16,488
2016	857	1,413	2,424	3,583	4,051	4,161	16,805

**Male**

Year	By Age Group						Total
	65 -69	70 -74	75 -79	80 -84	85 -89	90+	
2006	173	487	1,041	1,191	942	676	4,511
2007	181	490	1,049	1,222	1,007	682	4,630
2008	188	501	1,046	1,255	1,070	692	4,752
2009	195	517	1,041	1,276	1,138	713	4,880
2010	202	530	1,035	1,309	1,179	763	5,018
2011	212	545	1,038	1,340	1,200	837	5,172
2012	227	569	1,048	1,354	1,235	884	5,316
2013	240	594	1,074	1,355	1,271	929	5,463
2014	251	616	1,110	1,351	1,298	981	5,607
2015	261	642	1,141	1,349	1,336	1,025	5,753
2016	270	672	1,177	1,359	1,372	1,059	5,909

**Female**

Dementia prevalence projections – LHINs- Alzheimer Society of Ontario

Year	By Age Group						Total
	65 -69	70 -74	75 -79	80 -84	85 -89	90+	
2006	398	597	1,220	2,199	2,296	2,380	9,089
2007	416	597	1,219	2,212	2,402	2,433	9,281
2008	434	606	1,222	2,207	2,525	2,463	9,457
2009	451	622	1,213	2,204	2,629	2,522	9,642
2010	469	634	1,205	2,219	2,672	2,629	9,829
2011	486	653	1,202	2,252	2,676	2,749	10,018
2012	519	683	1,206	2,252	2,694	2,859	10,213
2013	546	713	1,224	2,259	2,690	2,964	10,396
2014	570	742	1,257	2,245	2,693	3,068	10,576
2015	596	771	1,283	2,234	2,715	3,136	10,735
2016	617	800	1,322	2,234	2,757	3,166	10,896

### LHIN 3 – Waterloo Wellington: Dementia Projections

**Total - Both sexes**

Year	By Age Group						Total
	65 -69	70 -74	75 -79	80 -84	85 -89	90+	
2006	340	662	1,404	2,089	1,817	1,619	7,930
2007	357	663	1,427	2,128	2,003	1,662	8,240
2008	379	670	1,429	2,185	2,170	1,696	8,528
2009	401	685	1,428	2,223	2,306	1,782	8,824
2010	420	703	1,428	2,265	2,380	1,944	9,140
2011	439	725	1,437	2,306	2,452	2,091	9,450
2012	472	759	1,445	2,343	2,501	2,264	9,784
2013	502	803	1,463	2,348	2,569	2,406	10,091
2014	527	847	1,500	2,347	2,616	2,542	10,379
2015	552	887	1,541	2,350	2,669	2,654	10,653
2016	576	929	1,591	2,373	2,718	2,756	10,942

**Male**

Year	By Age Group						Total
	65 -69	70 -74	75 -79	80 -84	85 -89	90+	
2006	106	296	631	714	543	381	2,671
2007	110	300	650	739	595	397	2,791
2008	116	305	658	768	643	413	2,902
2009	122	315	663	787	692	432	3,010
2010	126	324	667	814	723	481	3,135
2011	133	337	668	847	752	523	3,259
2012	143	350	677	876	780	568	3,395
2013	152	369	692	889	813	605	3,519
2014	161	387	715	897	836	646	3,641
2015	169	404	737	905	868	685	3,767
2016	176	424	766	910	907	719	3,901

**Female**

Year	By Age Group						Total
	65 -69	70 -74	75 -79	80 -84	85 -89	90+	
2006	234	365	773	1,374	1,274	1,238	5,260
2007	247	364	777	1,390	1,407	1,264	5,449
2008	263	365	771	1,417	1,527	1,283	5,626
2009	279	370	765	1,436	1,614	1,350	5,814
2010	293	379	761	1,452	1,658	1,463	6,005
2011	307	389	769	1,458	1,699	1,568	6,191
2012	329	409	767	1,467	1,721	1,696	6,389
2013	350	435	771	1,459	1,756	1,801	6,572
2014	366	460	785	1,450	1,780	1,896	6,737
2015	383	483	804	1,445	1,801	1,969	6,885
2016	400	505	825	1,463	1,811	2,037	7,041



### LHIN 4 – Hamilton Niagara Haldimand Brant: Dementia Projections

**Total - Both sexes**

Year	By Age Group						Total
	65 -69	70 -74	75 -79	80 -84	85 -89	90+	
2006	836	1,658	3,499	5,495	4,738	4,226	20,452
2007	865	1,652	3,514	5,543	5,149	4,288	21,011
2008	903	1,661	3,510	5,561	5,539	4,373	21,547
2009	935	1,687	3,505	5,559	5,864	4,498	22,049
2010	964	1,714	3,507	5,543	6,091	4,819	22,638
2011	1,000	1,758	3,487	5,579	6,233	5,183	23,241
2012	1,076	1,820	3,484	5,610	6,292	5,547	23,830
2013	1,132	1,903	3,512	5,613	6,320	5,885	24,365
2014	1,180	1,976	3,576	5,615	6,324	6,169	24,839
2015	1,227	2,043	3,640	5,634	6,321	6,454	25,319
2016	1,268	2,125	3,741	5,622	6,383	6,683	25,821

**Male**

Year	By Age Group						Total
	65 -69	70 -74	75 -79	80 -84	85 -89	90+	
2006	250	736	1,596	1,912	1,374	1,046	6,912
2007	258	736	1,615	1,943	1,509	1,045	7,106
2008	270	744	1,617	1,971	1,654	1,033	7,289
2009	281	754	1,619	1,990	1,767	1,064	7,477
2010	291	769	1,612	2,022	1,849	1,142	7,685
2011	304	790	1,598	2,063	1,915	1,238	7,908
2012	327	818	1,605	2,096	1,953	1,339	8,138
2013	344	857	1,628	2,105	1,990	1,438	8,361
2014	358	896	1,655	2,114	2,018	1,528	8,569
2015	372	928	1,692	2,113	2,061	1,607	8,774
2016	383	971	1,743	2,104	2,118	1,683	9,002

**Female**

Year	By Age Group						Total
	65 -69	70 -74	75 -79	80 -84	85 -89	90+	
2006	586	922	1,904	3,583	3,364	3,180	13,540
2007	607	916	1,898	3,600	3,640	3,243	13,905
2008	633	917	1,893	3,590	3,885	3,341	14,258
2009	653	933	1,886	3,568	4,097	3,434	14,572
2010	674	944	1,895	3,521	4,242	3,676	14,953
2011	697	967	1,888	3,516	4,319	3,946	15,333
2012	749	1,002	1,879	3,514	4,339	4,208	15,691
2013	789	1,045	1,885	3,509	4,330	4,447	16,004
2014	821	1,080	1,921	3,500	4,306	4,641	16,270
2015	854	1,115	1,948	3,522	4,260	4,848	16,545
2016	885	1,154	1,998	3,517	4,265	5,000	16,819

### LHIN 5 – Central West: Dementia Projections

**Total - Both sexes**

Year	By Age Group						Total
	65 -69	70 -74	75 -79	80 -84	85 -89	90+	
2006	333	586	1,081	1,490	1,300	1,201	5,991
2007	347	605	1,106	1,554	1,440	1,237	6,289
2008	366	622	1,142	1,617	1,568	1,285	6,600
2009	384	645	1,177	1,654	1,699	1,354	6,913
2010	400	670	1,203	1,723	1,773	1,468	7,237
2011	425	689	1,242	1,776	1,850	1,616	7,598
2012	462	719	1,280	1,815	1,928	1,755	7,958
2013	492	757	1,318	1,874	2,004	1,879	8,326
2014	520	793	1,368	1,932	2,049	2,019	8,681
2015	545	829	1,419	1,973	2,132	2,124	9,023
2016	564	880	1,463	2,039	2,198	2,251	9,395

**Male**

Year	By Age Group						Total
	65 -69	70 -74	75 -79	80 -84	85 -89	90+	
2006	101	269	507	510	397	267	2,051
2007	106	276	523	549	438	285	2,178
2008	112	285	542	584	479	309	2,311
2009	117	297	558	615	521	335	2,443
2010	123	306	575	654	551	370	2,580
2011	131	315	593	690	578	423	2,730
2012	142	330	609	714	624	462	2,881
2013	150	348	629	741	666	503	3,037
2014	158	365	657	763	702	547	3,192
2015	164	384	677	787	747	583	3,344
2016	169	409	697	815	789	626	3,505

**Female**

Year	By Age Group						Total
	65 -69	70 -74	75 -79	80 -84	85 -89	90+	
2006	232	317	574	980	903	934	3,940
2007	241	328	582	1,005	1,002	952	4,111
2008	255	337	599	1,033	1,089	976	4,289
2009	266	348	619	1,039	1,179	1,019	4,470
2010	277	363	628	1,069	1,222	1,098	4,657
2011	293	375	648	1,086	1,273	1,193	4,868
2012	320	389	671	1,101	1,304	1,292	5,077
2013	342	410	689	1,133	1,339	1,376	5,289
2014	362	428	711	1,168	1,346	1,473	5,489
2015	380	445	742	1,185	1,385	1,541	5,679
2016	395	471	765	1,224	1,409	1,625	5,889

### LHIN 6 – Mississauga Halton: Dementia Projections

**Total - Both sexes**

Year	By Age Group						Total
	65 -69	70 -74	75 -79	80 -84	85 -89	90+	
2006	499	910	1,721	2,418	2,123	1,755	9,426
2007	515	929	1,782	2,497	2,322	1,906	9,950
2008	536	949	1,833	2,585	2,538	2,015	10,456
2009	559	977	1,868	2,668	2,746	2,147	10,965
2010	582	1,005	1,907	2,771	2,881	2,373	11,519
2011	611	1,033	1,940	2,858	3,029	2,610	12,082
2012	662	1,067	1,978	2,955	3,123	2,848	12,633
2013	706	1,112	2,020	3,036	3,229	3,072	13,175
2014	745	1,159	2,080	3,092	3,330	3,296	13,703
2015	784	1,209	2,140	3,157	3,458	3,497	14,245
2016	821	1,269	2,202	3,212	3,570	3,714	14,788

**Male**

Year	By Age Group						Total
	65 -69	70 -74	75 -79	80 -84	85 -89	90+	
2006	151	415	798	857	652	418	3,291
2007	157	423	833	899	724	461	3,495
2008	164	432	864	938	805	500	3,703
2009	171	444	884	993	872	539	3,903
2010	178	455	904	1,048	929	620	4,134
2011	187	471	920	1,098	984	701	4,361
2012	202	489	937	1,146	1,031	776	4,582
2013	215	511	958	1,191	1,077	857	4,809
2014	227	534	986	1,218	1,142	921	5,027
2015	239	558	1,011	1,248	1,207	998	5,261
2016	249	585	1,047	1,273	1,268	1,073	5,495

**Female**

Year	By Age Group						Total
	65 -69	70 -74	75 -79	80 -84	85 -89	90+	
2006	348	496	922	1,561	1,471	1,337	6,135
2007	358	507	949	1,598	1,598	1,445	6,455
2008	372	517	969	1,647	1,733	1,515	6,752
2009	388	533	984	1,675	1,874	1,608	7,062
2010	404	550	1,003	1,723	1,952	1,753	7,385
2011	425	562	1,020	1,760	2,046	1,909	7,721
2012	460	578	1,041	1,809	2,092	2,072	8,052
2013	491	601	1,063	1,845	2,151	2,215	8,366
2014	518	625	1,094	1,874	2,189	2,376	8,676
2015	545	651	1,129	1,909	2,251	2,499	8,983
2016	572	684	1,154	1,939	2,302	2,642	9,293

### LHIN 7 – Toronto Central: Dementia Projections

**Total - Both sexes**

Year	By Age Group						Total
	65 -69	70 -74	75 -79	80 -84	85 -89	90+	
2006	612	1,215	2,579	3,981	3,536	3,547	15,471
2007	611	1,198	2,572	4,018	3,798	3,640	15,837
2008	618	1,182	2,559	4,036	4,098	3,698	16,191
2009	630	1,182	2,534	4,023	4,351	3,791	16,510
2010	644	1,184	2,488	4,052	4,475	4,037	16,879
2011	669	1,183	2,446	4,070	4,568	4,334	17,271
2012	720	1,189	2,422	4,071	4,618	4,593	17,612
2013	761	1,208	2,401	4,062	4,649	4,861	17,943
2014	797	1,233	2,408	4,029	4,641	5,100	18,208
2015	833	1,264	2,418	3,967	4,683	5,290	18,455
2016	859	1,315	2,425	3,914	4,717	5,477	18,708

**Male**

Year	By Age Group						Total
	65 -69	70 -74	75 -79	80 -84	85 -89	90+	
2006	174	535	1,158	1,380	1,109	805	5,160
2007	174	526	1,159	1,404	1,191	846	5,300
2008	177	517	1,158	1,423	1,284	875	5,435
2009	180	514	1,152	1,443	1,348	912	5,550
2010	185	513	1,134	1,469	1,382	994	5,678
2011	192	514	1,117	1,489	1,411	1,089	5,812
2012	207	518	1,105	1,499	1,443	1,166	5,937
2013	218	528	1,092	1,505	1,472	1,244	6,060
2014	228	541	1,091	1,502	1,497	1,299	6,159
2015	238	556	1,093	1,485	1,530	1,350	6,252
2016	245	579	1,098	1,470	1,558	1,403	6,353

**Female**

Year	By Age Group						Total
	65 -69	70 -74	75 -79	80 -84	85 -89	90+	
2006	439	680	1,421	2,602	2,427	2,743	10,312
2007	437	672	1,413	2,614	2,607	2,794	10,537
2008	442	665	1,401	2,612	2,814	2,823	10,757
2009	449	668	1,382	2,580	3,003	2,879	10,960
2010	459	670	1,353	2,583	3,093	3,043	11,201
2011	477	670	1,328	2,580	3,158	3,246	11,459
2012	513	671	1,317	2,572	3,175	3,427	11,675
2013	543	680	1,309	2,557	3,177	3,617	11,883
2014	569	692	1,317	2,527	3,143	3,801	12,049
2015	596	708	1,324	2,482	3,153	3,941	12,203
2016	614	736	1,327	2,445	3,159	4,074	12,355

### LHIN 8 - Central: Dementia Projections

**Total - Both sexes**

Year	By Age Group						Total
	65 -69	70 -74	75 -79	80 -84	85 -89	90+	
2006	793	1,519	2,969	4,274	3,750	3,578	16,883
2007	813	1,538	3,038	4,413	4,102	3,727	17,631
2008	839	1,559	3,103	4,543	4,456	3,892	18,392
2009	868	1,591	3,155	4,643	4,792	4,092	19,141
2010	901	1,625	3,183	4,777	5,031	4,450	19,969
2011	951	1,657	3,220	4,925	5,203	4,882	20,839
2012	1,039	1,701	3,259	5,036	5,368	5,261	21,665
2013	1,121	1,760	3,306	5,142	5,528	5,641	22,497
2014	1,195	1,826	3,377	5,226	5,648	6,016	23,288
2015	1,270	1,900	3,454	5,277	5,819	6,371	24,091
2016	1,331	2,005	3,527	5,345	6,005	6,692	24,905

**Male**

Year	By Age Group						Total
	65 -69	70 -74	75 -79	80 -84	85 -89	90+	
2006	235	688	1,377	1,517	1,141	870	5,829
2007	242	693	1,419	1,595	1,260	915	6,124
2008	252	700	1,455	1,663	1,394	966	6,430
2009	263	711	1,483	1,738	1,503	1,034	6,732
2010	275	728	1,499	1,809	1,604	1,146	7,061
2011	290	744	1,516	1,888	1,682	1,287	7,408
2012	319	767	1,530	1,947	1,771	1,404	7,740
2013	344	799	1,547	1,999	1,853	1,537	8,081
2014	365	835	1,576	2,042	1,941	1,653	8,412
2015	385	873	1,614	2,068	2,027	1,782	8,750
2016	403	923	1,655	2,097	2,121	1,904	9,103

**Female**

Year	By Age Group						Total
	65 -69	70 -74	75 -79	80 -84	85 -89	90+	
2006	558	831	1,592	2,757	2,609	2,707	11,054
2007	571	845	1,619	2,817	2,842	2,813	11,507
2008	587	859	1,648	2,880	3,062	2,926	11,962
2009	605	880	1,671	2,905	3,289	3,059	12,408
2010	627	898	1,684	2,968	3,427	3,304	12,909
2011	660	913	1,704	3,038	3,522	3,595	13,431
2012	720	934	1,729	3,088	3,597	3,856	13,925
2013	777	961	1,758	3,142	3,674	4,103	14,416
2014	830	991	1,802	3,184	3,708	4,363	14,877
2015	885	1,027	1,840	3,209	3,792	4,589	15,341
2016	929	1,082	1,872	3,248	3,884	4,788	15,802

### LHIN 9 – Central East: Dementia Projections

**Total - Both sexes**

Year	By Age Group						Total
	65 -69	70 -74	75 -79	80 -84	85 -89	90+	
2006	813	1,612	3,266	4,801	4,361	3,983	18,837
2007	835	1,612	3,323	4,894	4,706	4,091	19,460
2008	869	1,617	3,359	4,993	5,037	4,217	20,092
2009	903	1,643	3,384	5,061	5,323	4,394	20,708
2010	939	1,669	3,384	5,161	5,507	4,711	21,372
2011	987	1,700	3,385	5,274	5,677	5,053	22,076
2012	1,072	1,751	3,396	5,373	5,790	5,381	22,763
2013	1,144	1,828	3,415	5,437	5,913	5,691	23,428
2014	1,206	1,902	3,476	5,480	5,998	5,976	24,037
2015	1,268	1,981	3,538	5,489	6,123	6,231	24,631
2016	1,321	2,082	3,612	5,506	6,267	6,481	25,269

**Male**

Year	By Age Group						Total
	65 -69	70 -74	75 -79	80 -84	85 -89	90+	
2006	240	726	1,496	1,679	1,319	932	6,392
2007	247	725	1,531	1,729	1,434	971	6,637
2008	260	723	1,556	1,797	1,530	1,019	6,885
2009	271	733	1,577	1,842	1,625	1,069	7,116
2010	283	743	1,580	1,905	1,693	1,155	7,360
2011	297	758	1,579	1,972	1,771	1,254	7,632
2012	322	784	1,582	2,026	1,833	1,354	7,901
2013	343	825	1,585	2,065	1,911	1,440	8,169
2014	361	862	1,610	2,096	1,964	1,520	8,414
2015	379	902	1,638	2,107	2,038	1,594	8,658
2016	396	948	1,676	2,114	2,118	1,685	8,938

**Female**

Year	By Age Group						Total
	65 -69	70 -74	75 -79	80 -84	85 -89	90+	
2006	574	886	1,770	3,122	3,042	3,051	12,445
2007	588	888	1,791	3,164	3,272	3,120	12,823
2008	610	894	1,803	3,196	3,507	3,197	13,207
2009	632	910	1,807	3,219	3,698	3,326	13,592
2010	656	925	1,804	3,256	3,815	3,555	14,012
2011	690	942	1,806	3,302	3,905	3,799	14,444
2012	750	967	1,814	3,347	3,958	4,027	14,862
2013	801	1,003	1,830	3,372	4,001	4,252	15,259
2014	845	1,040	1,866	3,383	4,033	4,455	15,622
2015	890	1,079	1,900	3,383	4,085	4,637	15,973
2016	926	1,134	1,936	3,391	4,148	4,796	16,331

### LHIN 10 – South East: Dementia Projections

**Total - Both sexes**

Year	By Age Group						Total
	65 -69	70 -74	75 -79	80 -84	85 -89	90+	
2006	350	664	1,268	1,870	1,824	1,493	7,470
2007	362	668	1,293	1,875	1,891	1,541	7,629
2008	379	681	1,295	1,899	1,965	1,577	7,795
2009	394	700	1,313	1,902	2,016	1,635	7,958
2010	408	712	1,332	1,917	2,051	1,712	8,132
2011	423	733	1,343	1,950	2,057	1,816	8,322
2012	454	760	1,353	1,991	2,065	1,875	8,497
2013	475	796	1,382	1,998	2,095	1,943	8,689
2014	493	826	1,423	2,028	2,101	1,995	8,865
2015	512	857	1,452	2,060	2,122	2,039	9,042
2016	527	888	1,497	2,081	2,164	2,072	9,230

**Male**

Year	By Age Group						Total
	65 -69	70 -74	75 -79	80 -84	85 -89	90+	
2006	108	306	591	660	560	331	2,556
2007	111	308	608	661	589	346	2,623
2008	117	313	610	677	612	363	2,693
2009	120	323	618	690	624	387	2,762
2010	124	328	628	708	629	417	2,833
2011	128	336	634	732	633	448	2,910
2012	137	348	640	756	635	468	2,984
2013	142	367	653	762	656	486	3,065
2014	148	377	675	773	671	498	3,142
2015	154	389	688	788	691	509	3,219
2016	158	403	706	799	718	518	3,303

**Female**

Year	By Age Group						Total
	65 -69	70 -74	75 -79	80 -84	85 -89	90+	
2006	242	358	677	1,210	1,264	1,162	4,914
2007	251	360	685	1,214	1,301	1,195	5,006
2008	261	368	685	1,222	1,353	1,214	5,103
2009	274	377	695	1,211	1,392	1,248	5,196
2010	285	384	704	1,209	1,422	1,295	5,299
2011	295	398	709	1,218	1,425	1,368	5,413
2012	318	412	713	1,234	1,429	1,407	5,513
2013	333	429	729	1,237	1,440	1,456	5,624
2014	345	449	748	1,254	1,430	1,496	5,723
2015	359	468	764	1,272	1,431	1,530	5,823
2016	369	485	791	1,282	1,445	1,554	5,927

### LHIN 11 - Champlain: Dementia Projections

**Total - Both sexes**

Year	By Age Group						Total
	65 -69	70 -74	75 -79	80 -84	85 -89	90+	
2006	643	1,208	2,424	3,693	3,466	3,196	14,629
2007	669	1,217	2,461	3,725	3,696	3,300	15,067
2008	701	1,234	2,491	3,764	3,925	3,406	15,521
2009	733	1,267	2,503	3,806	4,123	3,506	15,937
2010	765	1,296	2,516	3,869	4,218	3,717	16,381
2011	804	1,332	2,541	3,933	4,293	3,977	16,879
2012	871	1,390	2,567	3,997	4,336	4,209	17,369
2013	928	1,457	2,610	4,050	4,387	4,436	17,868
2014	975	1,525	2,683	4,072	4,441	4,617	18,312
2015	1,023	1,593	2,749	4,098	4,521	4,754	18,738
2016	1,065	1,677	2,831	4,146	4,604	4,892	19,215

**Male**

Year	By Age Group						Total
	65 -69	70 -74	75 -79	80 -84	85 -89	90+	
2006	194	542	1,086	1,239	970	669	4,701
2007	203	548	1,114	1,262	1,048	698	4,873
2008	212	557	1,134	1,304	1,117	737	5,062
2009	222	572	1,146	1,341	1,192	754	5,227
2010	232	587	1,158	1,375	1,238	819	5,409
2011	244	604	1,175	1,425	1,273	890	5,611
2012	266	633	1,192	1,466	1,302	958	5,817
2013	284	664	1,217	1,498	1,352	1,022	6,036
2014	298	695	1,253	1,517	1,396	1,079	6,238
2015	314	726	1,288	1,537	1,437	1,133	6,435
2016	325	766	1,328	1,566	1,496	1,176	6,656

**Female**

Year	By Age Group						Total
	65 -69	70 -74	75 -79	80 -84	85 -89	90+	
2006	449	666	1,337	2,454	2,496	2,526	9,929
2007	466	669	1,346	2,463	2,649	2,601	10,194
2008	488	677	1,357	2,460	2,808	2,669	10,459
2009	511	694	1,357	2,465	2,930	2,752	10,709
2010	533	709	1,358	2,494	2,980	2,898	10,972
2011	560	729	1,366	2,508	3,020	3,087	11,269
2012	605	757	1,375	2,530	3,034	3,251	11,552
2013	644	793	1,393	2,552	3,035	3,414	11,832
2014	677	830	1,430	2,555	3,045	3,538	12,074
2015	710	867	1,461	2,560	3,084	3,621	12,303
2016	741	911	1,503	2,580	3,107	3,716	12,558



### LHIN 12 – North Simcoe Muskoka: Dementia Projections

**Total - Both sexes**

Year	By Age Group						Total
	65 -69	70 -74	75 -79	80 -84	85 -89	90+	
2006	291	555	1,048	1,398	1,247	1,013	5,552
2007	310	566	1,079	1,451	1,317	1,068	5,791
2008	330	583	1,116	1,510	1,380	1,098	6,017
2009	348	605	1,144	1,552	1,450	1,154	6,254
2010	364	626	1,166	1,615	1,501	1,240	6,514
2011	382	651	1,191	1,667	1,563	1,334	6,789
2012	412	689	1,215	1,713	1,623	1,411	7,062
2013	433	730	1,250	1,770	1,686	1,465	7,335
2014	453	769	1,299	1,816	1,731	1,533	7,601
2015	474	805	1,343	1,853	1,802	1,605	7,881
2016	492	845	1,396	1,896	1,862	1,685	8,175

**Male**

Year	By Age Group						Total
	65 -69	70 -74	75 -79	80 -84	85 -89	90+	
2006	88	258	495	509	374	243	1,967
2007	93	261	516	534	398	261	2,063
2008	98	268	538	559	425	263	2,151
2009	104	277	551	581	458	275	2,246
2010	109	284	560	615	478	304	2,351
2011	115	294	570	644	505	330	2,459
2012	125	311	578	671	532	354	2,570
2013	132	329	594	699	556	373	2,683
2014	139	346	614	717	580	398	2,794
2015	145	365	632	730	616	421	2,909
2016	151	385	654	746	646	447	3,030

**Female**

Year	By Age Group						Total
	65 -69	70 -74	75 -79	80 -84	85 -89	90+	
2006	204	297	553	889	873	770	3,585
2007	217	305	563	916	919	807	3,727
2008	232	314	578	951	955	835	3,865
2009	245	328	593	971	992	878	4,008
2010	255	342	606	1,000	1,023	936	4,163
2011	267	357	621	1,023	1,058	1,004	4,330
2012	287	377	637	1,042	1,091	1,057	4,492
2013	301	401	656	1,071	1,130	1,093	4,652
2014	315	422	684	1,098	1,151	1,136	4,807
2015	329	440	711	1,123	1,186	1,184	4,972
2016	342	460	741	1,150	1,215	1,237	5,146

### LHIN 13 – North East: Dementia Projections

**Total - Both sexes**

Year	By Age Group						Total
	65 -69	70 -74	75 -79	80 -84	85 -89	90+	
2006	410	781	1,459	2,001	1,664	1,382	7,697
2007	421	775	1,485	2,044	1,783	1,397	7,905
2008	437	780	1,503	2,077	1,880	1,429	8,107
2009	445	797	1,510	2,108	1,974	1,462	8,297
2010	454	807	1,524	2,144	2,052	1,538	8,520
2011	467	825	1,541	2,185	2,123	1,604	8,745
2012	495	850	1,534	2,230	2,170	1,704	8,982
2013	515	882	1,549	2,260	2,205	1,788	9,199
2014	534	904	1,585	2,273	2,239	1,863	9,398
2015	553	924	1,610	2,299	2,284	1,942	9,612
2016	567	954	1,649	2,333	2,332	2,004	9,840

**Male**

Year	By Age Group						Total
	65 -69	70 -74	75 -79	80 -84	85 -89	90+	
2006	124	364	689	700	476	326	2,678
2007	128	359	699	734	508	317	2,746
2008	132	361	710	755	532	320	2,810
2009	136	364	716	774	568	318	2,875
2010	140	366	725	797	593	335	2,955
2011	144	373	731	819	628	346	3,041
2012	153	385	724	835	664	367	3,128
2013	160	399	730	850	684	384	3,207
2014	167	411	738	861	703	405	3,285
2015	173	424	745	875	727	425	3,369
2016	177	439	763	886	752	449	3,466

**Female**

Year	By Age Group						Total
	65 -69	70 -74	75 -79	80 -84	85 -89	90+	
2006	286	417	770	1,301	1,188	1,056	5,018
2007	293	416	786	1,310	1,275	1,080	5,160
2008	304	420	793	1,322	1,348	1,109	5,296
2009	309	433	794	1,335	1,406	1,144	5,422
2010	314	442	799	1,347	1,459	1,203	5,565
2011	323	452	810	1,366	1,495	1,258	5,704
2012	342	465	810	1,395	1,506	1,337	5,854
2013	354	483	819	1,410	1,521	1,404	5,992
2014	367	492	847	1,412	1,537	1,458	6,113
2015	381	501	864	1,424	1,557	1,516	6,243
2016	390	515	886	1,447	1,580	1,555	6,374

### LHIN 14 – North West: Dementia Projections

**Total - Both sexes**

Year	By Age Group						Total
	65 -69	70 -74	75 -79	80 -84	85 -89	90+	
2006	135	261	538	815	696	566	3,010
2007	137	258	534	817	742	585	3,073
2008	141	259	528	827	767	603	3,126
2009	144	263	524	824	801	605	3,161
2010	148	265	522	816	832	631	3,214
2011	152	270	519	810	852	662	3,265
2012	165	275	517	806	857	702	3,322
2013	175	283	520	799	869	724	3,371
2014	184	290	529	794	865	745	3,408
2015	195	300	535	792	858	774	3,454
2016	204	311	547	791	853	796	3,501

**Male**

Year	By Age Group						Total
	65 -69	70 -74	75 -79	80 -84	85 -89	90+	
2006	42	119	251	301	195	120	1,028
2007	43	118	250	302	219	121	1,053
2008	43	119	246	308	234	123	1,074
2009	44	122	246	305	242	136	1,094
2010	46	123	246	301	263	139	1,118
2011	49	125	244	302	273	146	1,139
2012	53	127	242	303	276	163	1,165
2013	57	130	246	299	282	173	1,187
2014	60	134	253	299	278	183	1,206
2015	63	140	257	300	277	196	1,232
2016	66	148	261	300	280	201	1,255

**Female**

Year	By Age Group						Total
	65 -69	70 -74	75 -79	80 -84	85 -89	90+	
2006	93	141	287	514	501	446	1,983
2007	94	140	284	515	523	463	2,020
2008	97	140	282	520	533	480	2,052
2009	100	141	278	520	559	469	2,067
2010	102	142	276	515	569	492	2,096
2011	104	145	275	507	578	516	2,126
2012	112	148	274	503	581	539	2,157
2013	118	153	274	500	588	551	2,184
2014	124	156	276	495	587	562	2,201
2015	132	160	278	492	581	578	2,221
2016	138	163	286	491	574	595	2,246

Dementia prevalence projections – LHINs- Alzheimer Society of Ontario

**All LHINs: Summary dementia projections, both sexes**

Year	LHIN						
	1	2	3	4	5	6	7
2006	8,623	13,600	7,930	20,452	5,991	9,426	15,471
2007	8,829	13,912	8,240	21,011	6,289	9,950	15,837
2008	9,010	14,209	8,528	21,547	6,600	10,456	16,191
2009	9,210	14,521	8,824	22,049	6,913	10,965	16,510
2010	9,425	14,847	9,140	22,638	7,237	11,519	16,879
2011	9,643	15,190	9,450	23,241	7,598	12,082	17,271
2012	9,857	15,529	9,784	23,830	7,958	12,633	17,612
2013	10,043	15,859	10,091	24,365	8,326	13,175	17,943
2014	10,224	16,183	10,379	24,839	8,681	13,703	18,208
2015	10,410	16,488	10,653	25,319	9,023	14,245	18,455
2016	10,593	16,805	10,942	25,821	9,395	14,788	18,708

Year	LHIN							All LHINs
	8	9	10	11	12	13	14	
2006	16,883	18,837	7,470	14,629	5,552	7,697	3,010	155,571
2007	17,631	19,460	7,629	15,067	5,791	7,905	3,073	160,624
2008	18,392	20,092	7,795	15,521	6,017	8,107	3,126	165,591
2009	19,141	20,708	7,958	15,937	6,254	8,297	3,161	170,448
2010	19,969	21,372	8,132	16,381	6,514	8,520	3,214	175,787
2011	20,839	22,076	8,322	16,879	6,789	8,745	3,265	181,390
2012	21,665	22,763	8,497	17,369	7,062	8,982	3,322	186,864
2013	22,497	23,428	8,689	17,868	7,335	9,199	3,371	192,190
2014	23,288	24,037	8,865	18,312	7,601	9,398	3,408	197,126
2015	24,091	24,631	9,042	18,738	7,881	9,612	3,454	202,041
2016	24,905	25,269	9,230	19,215	8,175	9,840	3,501	207,188

## APPENDIX 1: METHODOLOGY

### Objective

To calculate the projected number of people with dementia in each LHIN.

### Data required

1. Population projections by LHIN for the population aged 65+, in 5-year age groups and by sex for selected years, in this case, 2006 to 2016.

Source: *LHIN Population Projections, 2006-2016 (2005 base) by Sex and 5-year age group*. Unpublished projections for LHINs by single year of age prepared by Ministry of Finance for Ministry of Health and Long-Term Care – Revised September 2006.

2. Dementia rates for the population aged 65+, in five-year age groups and by sex.

**Dementia Rates Per 1,000**

5-Year Age Group	Male	Female	Total
65-69	9.4	20.2	15.2
70-74	32.3	34.6	33.6
75-79	82.4	77.5	79.5
80-84	143.3	173.1	162.4
85-89	243.9	302.1	283.4
90+	448.4	541.7	517.5
All	61.3	92.0	79.1

Source: *Dementia – 5-yr Prevalence Estimates* (unpublished). Canadian Study of Health and Aging.

### Calculation

For any given year, apply the dementia rates to population projections for males and females in each age group to get the projected number of men and women with dementia in each age group.

Add male and female cases to get dementia projections per age group.

Add age group totals to get total dementia projections in a given year.

### Result

For each LHIN, dementia projections by five-year age group and by sex, 2006-2016.

**APPENDIX 2: LOCAL HEALTH INTEGRATION NETWORKS**

1	Erie St. Clair
2	South West
3	Waterloo Wellington
4	Hamilton Niagara Haldimand Brant
5	Central West
6	Mississauga Halton
7	Toronto Central
8	Central
9	Central East
10	South East
11	Champlain
12	North Simcoe Muskoka
13	North East
14	North West